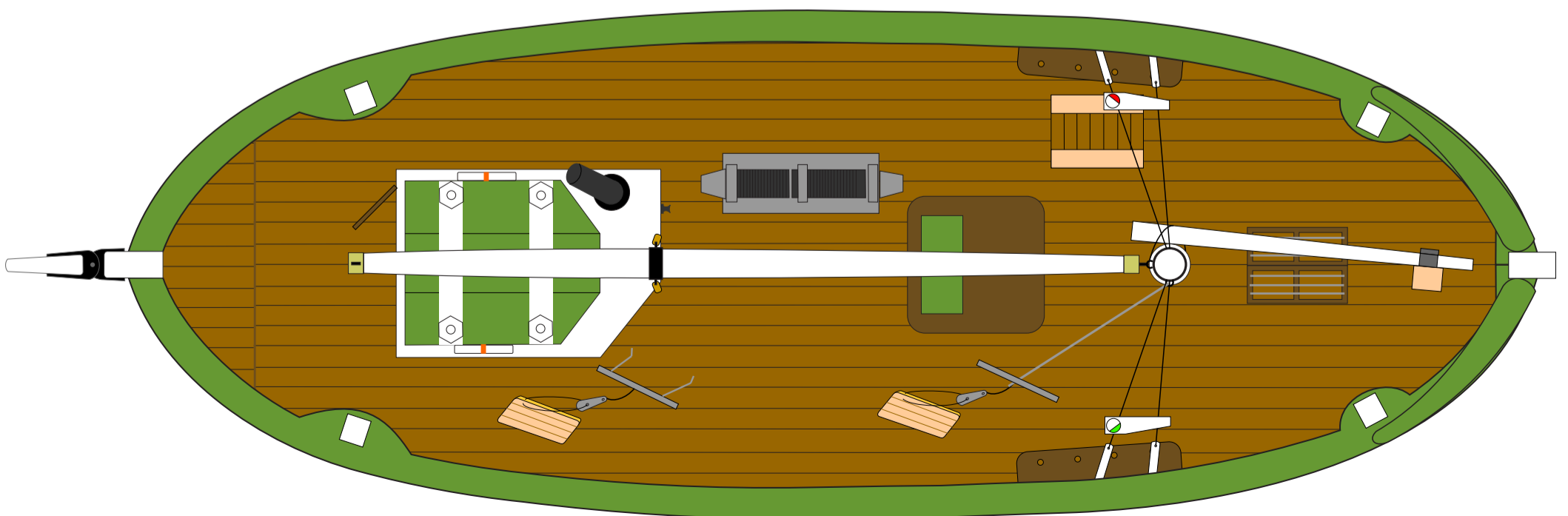
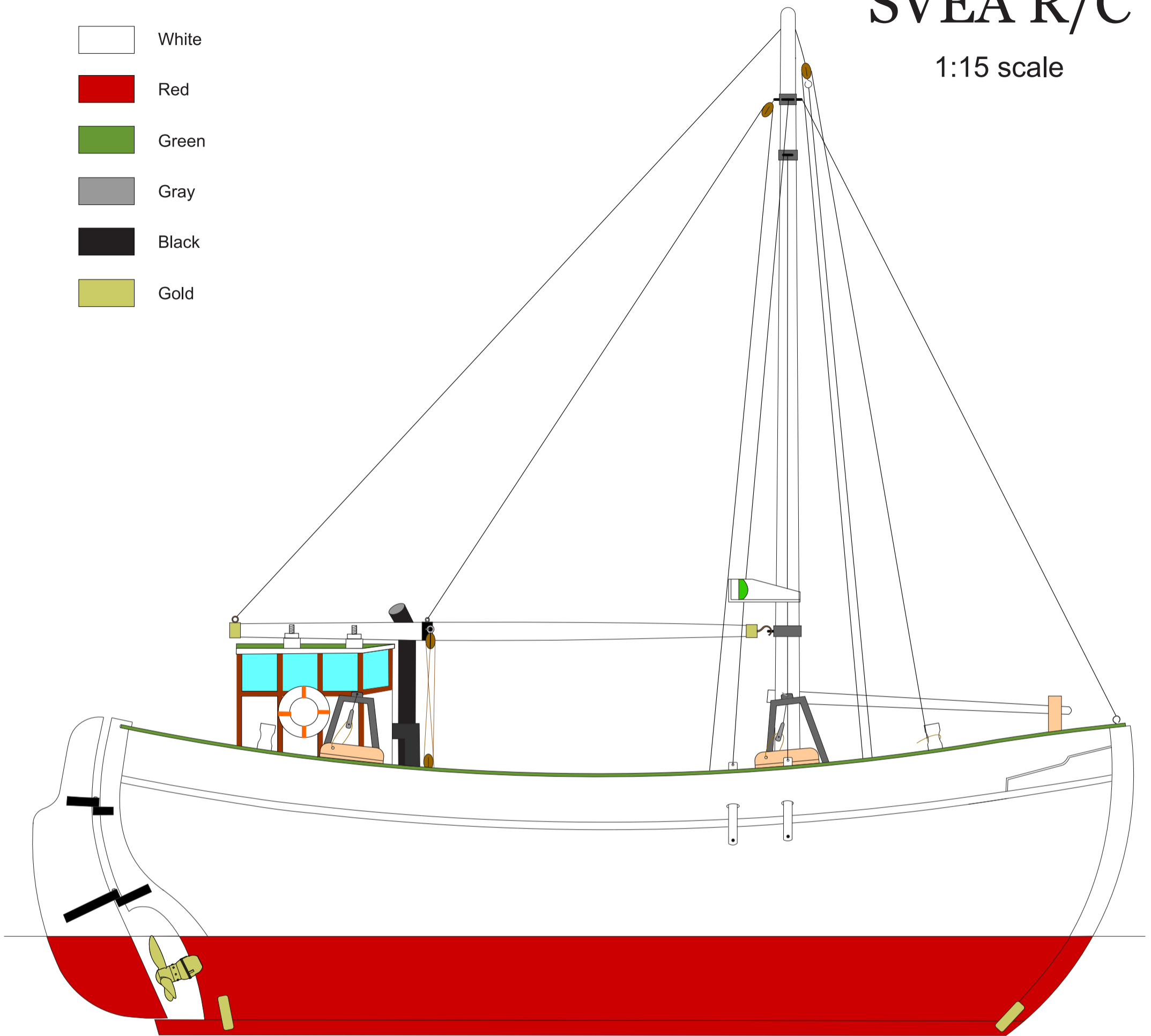
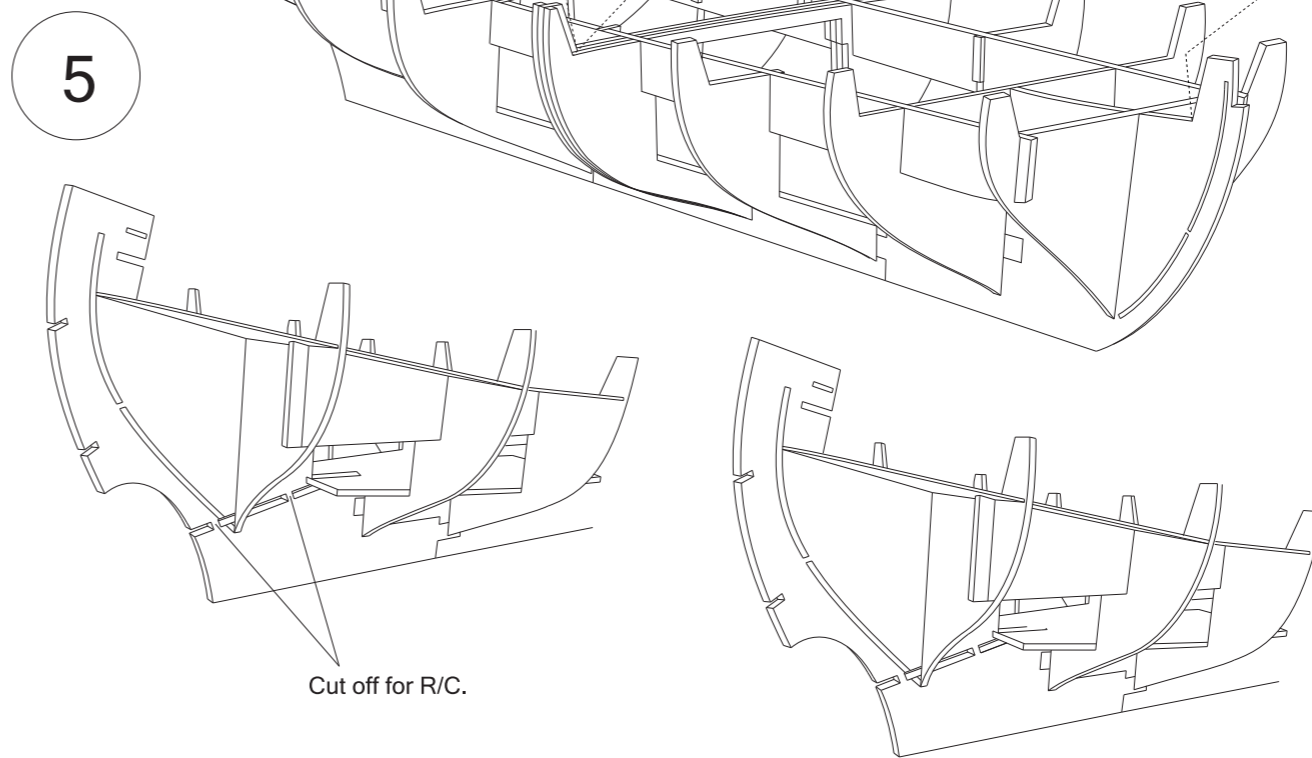
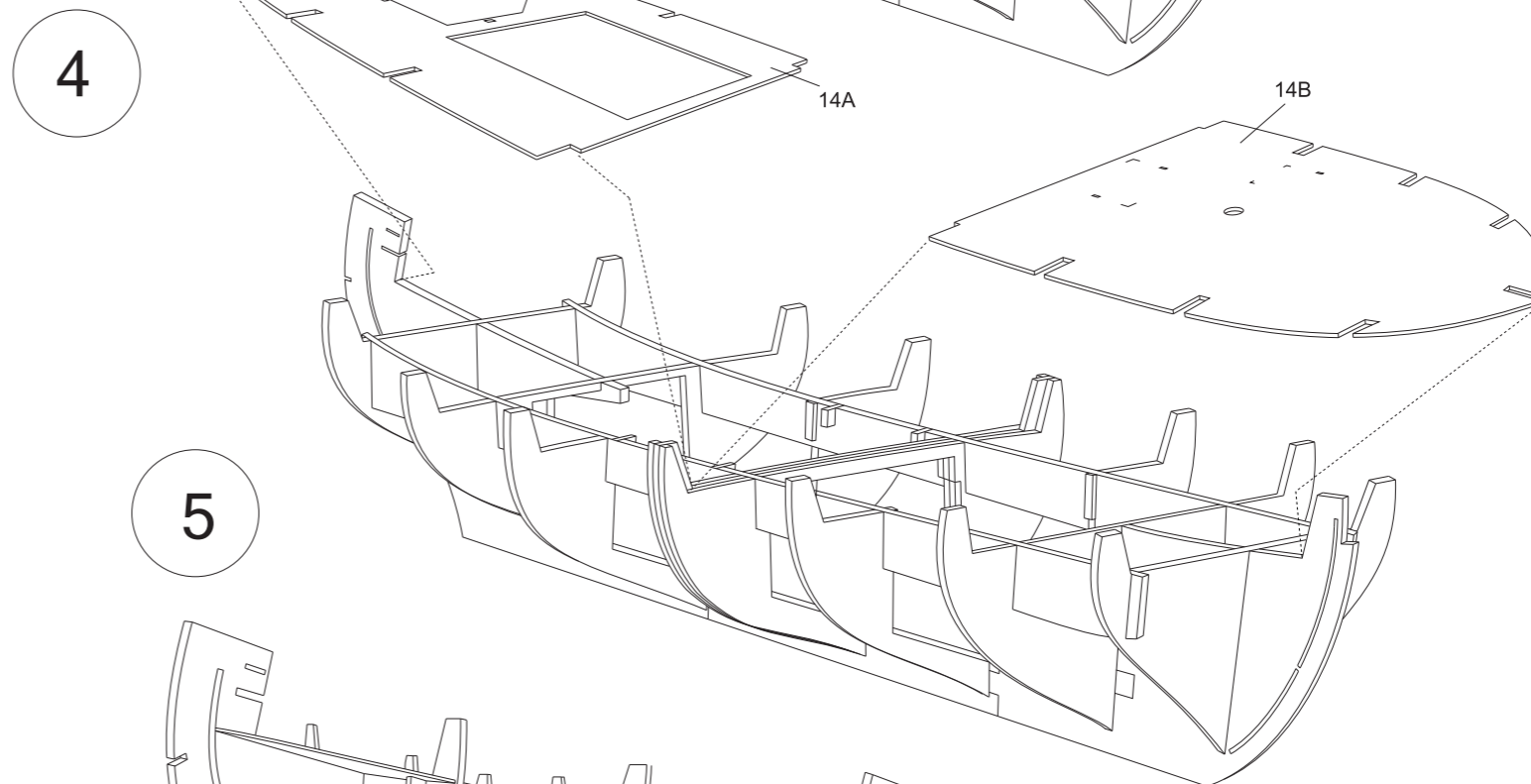
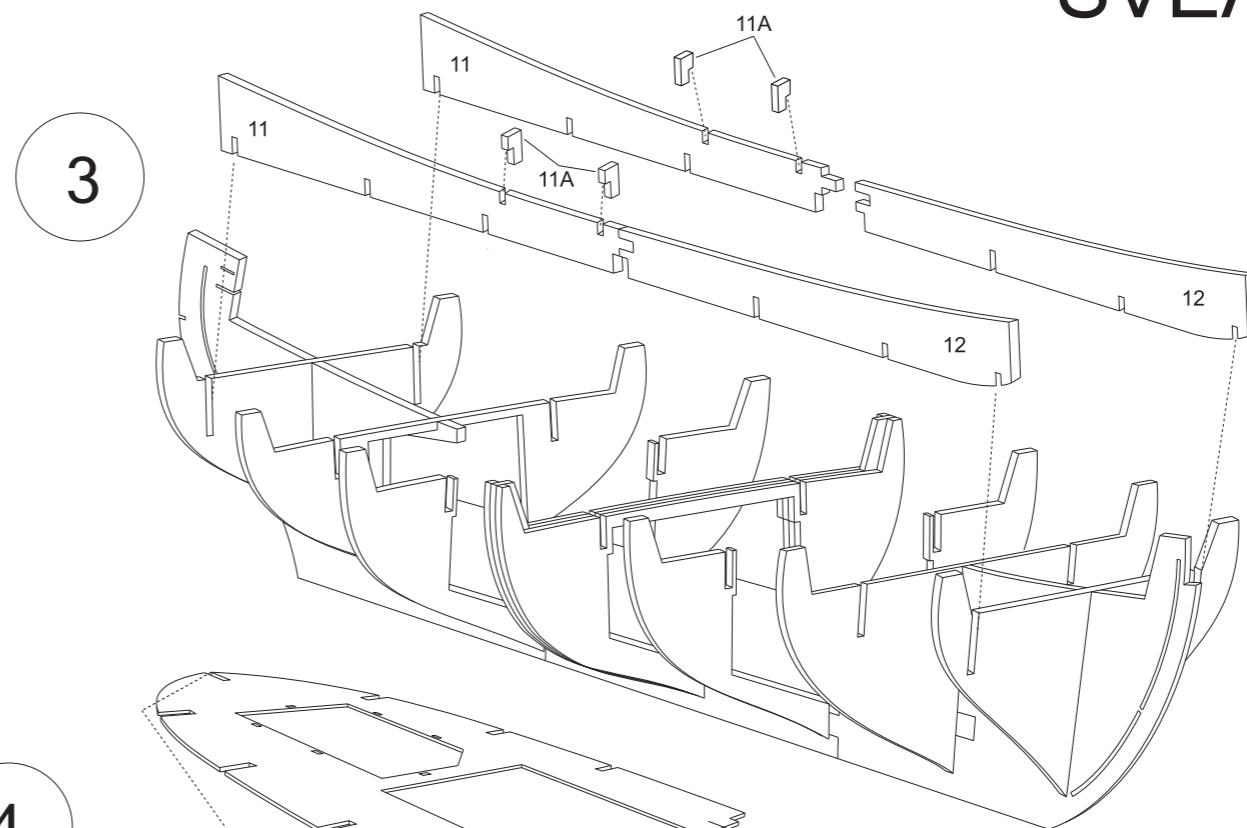
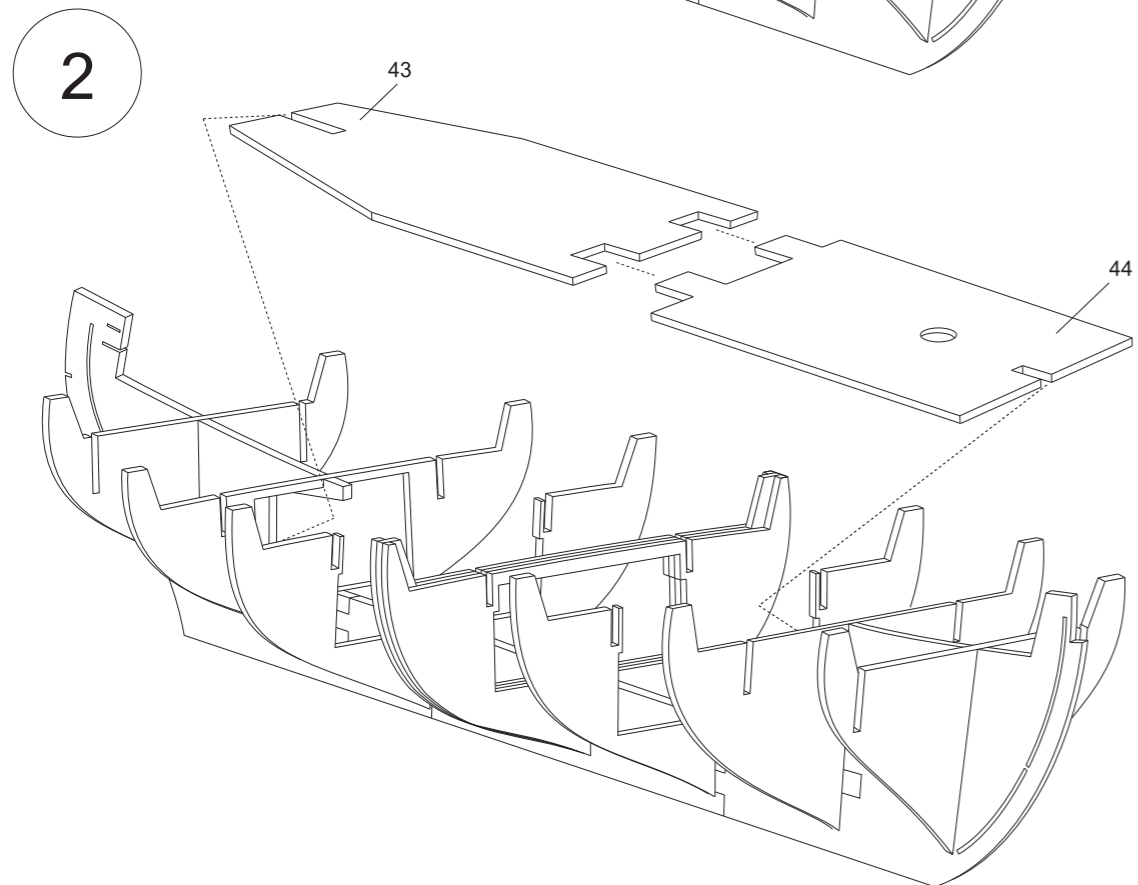
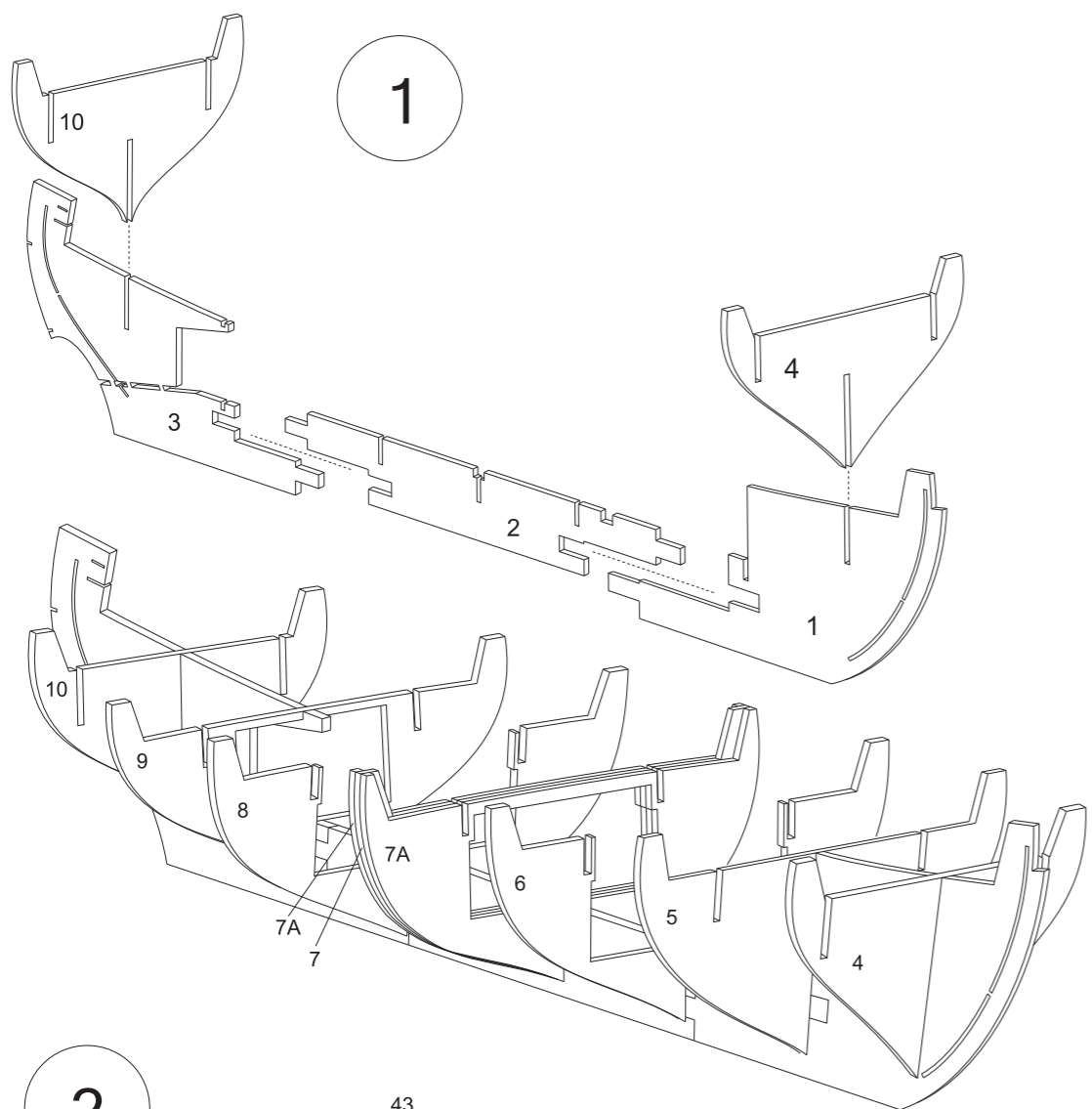


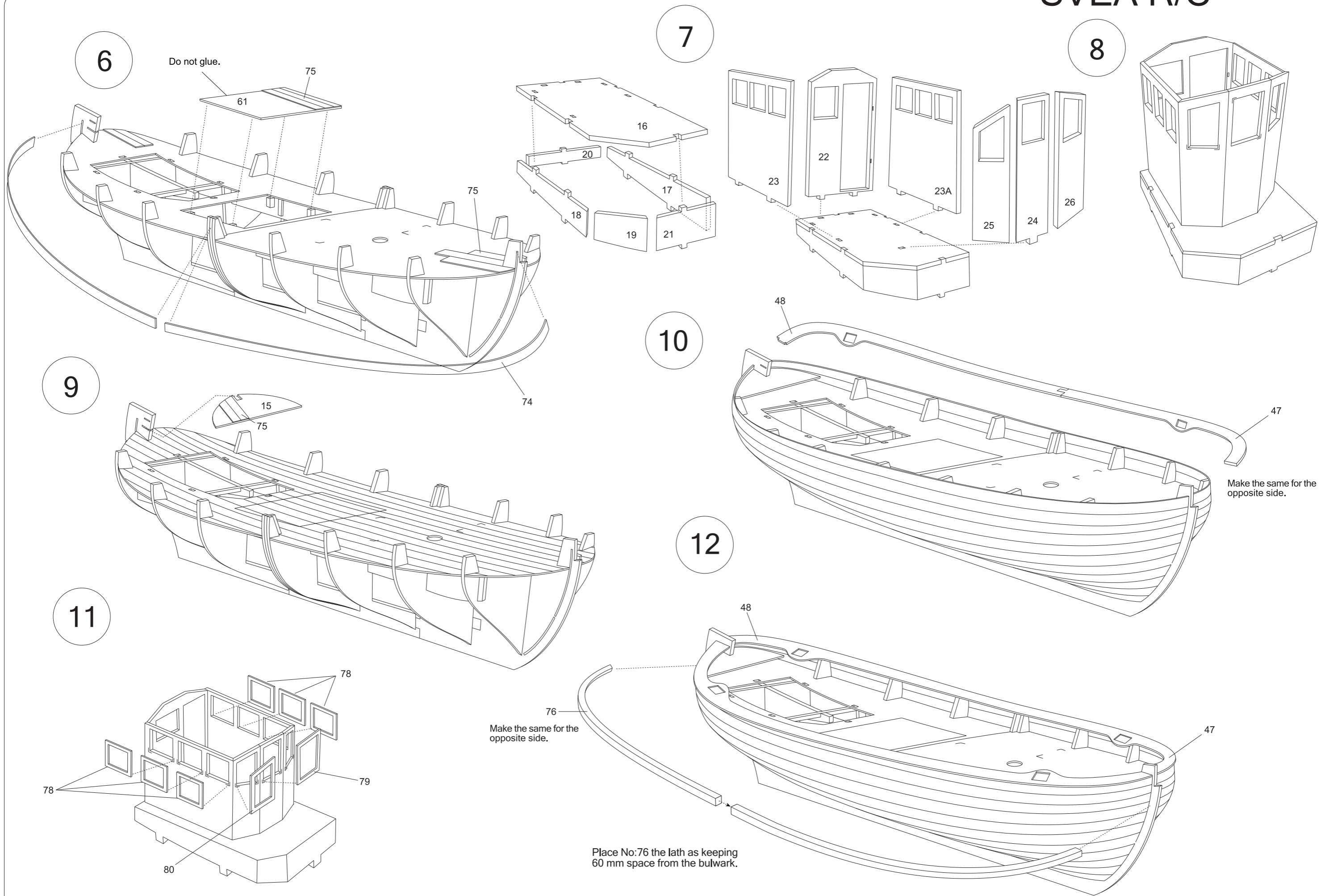
# SVEA R/C

1:15 scale

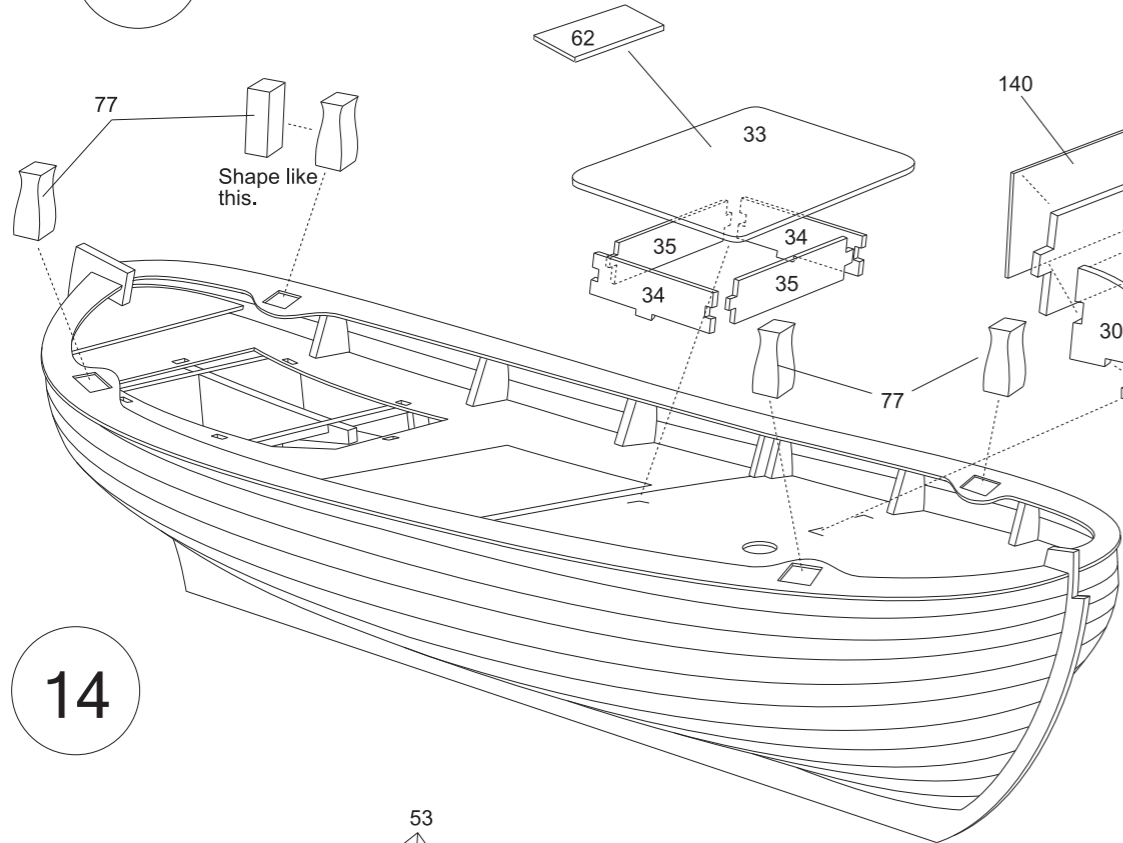
- White
- Red
- Green
- Gray
- Black
- Gold



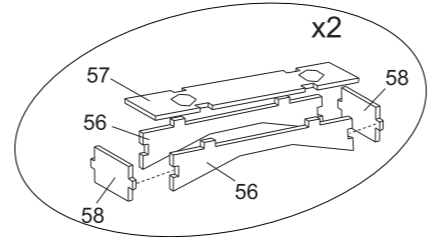




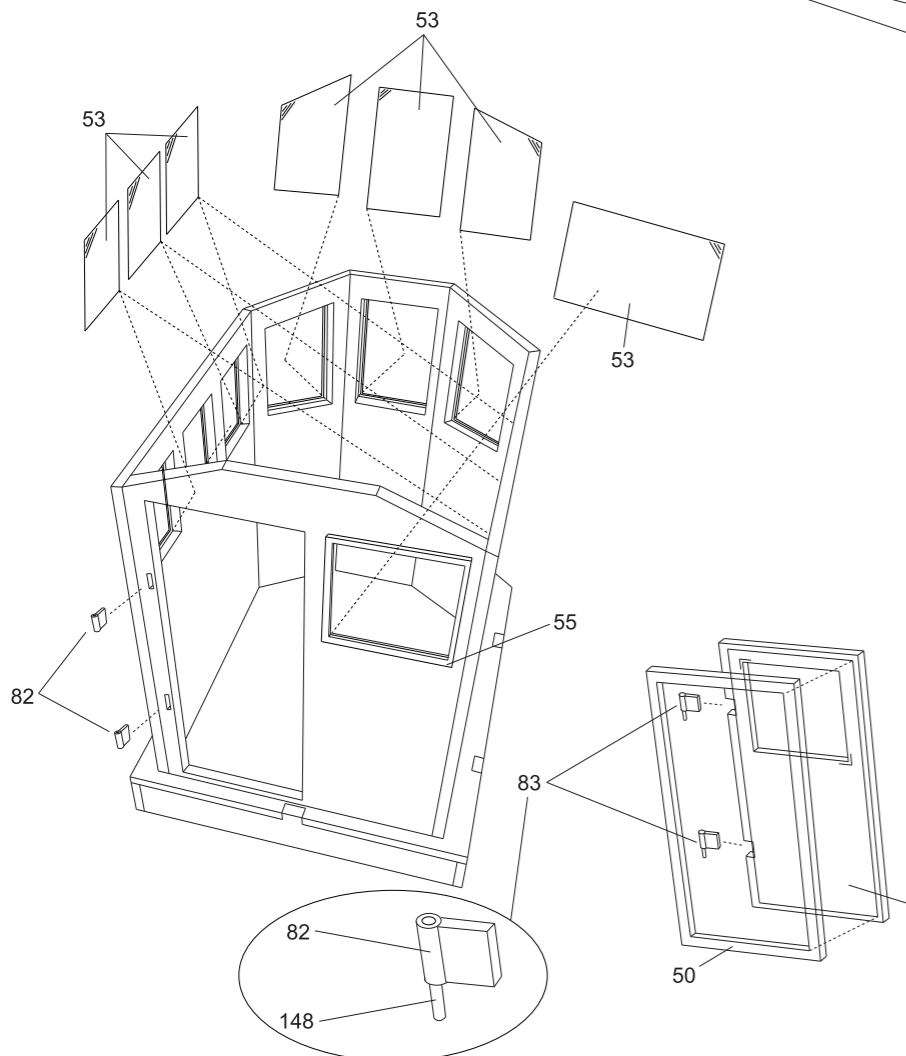
13



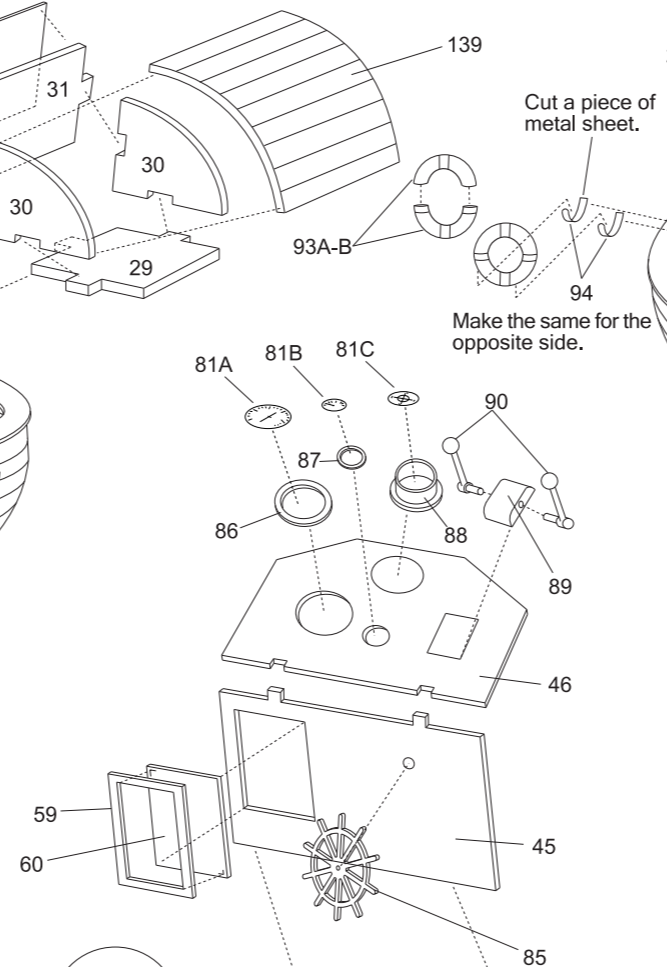
16



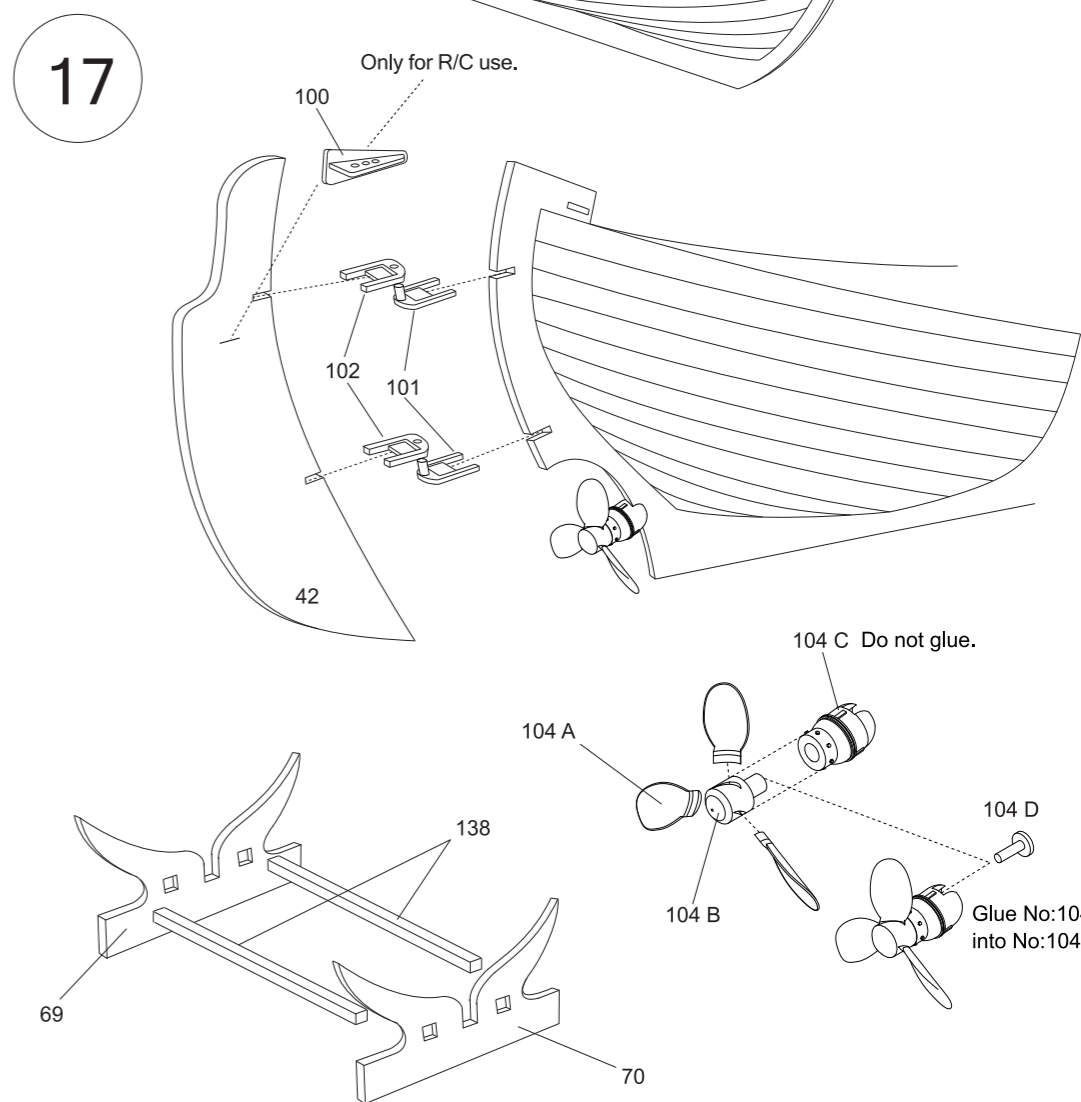
14



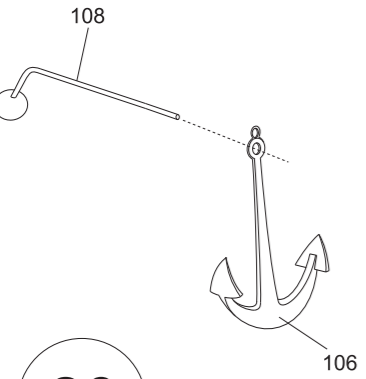
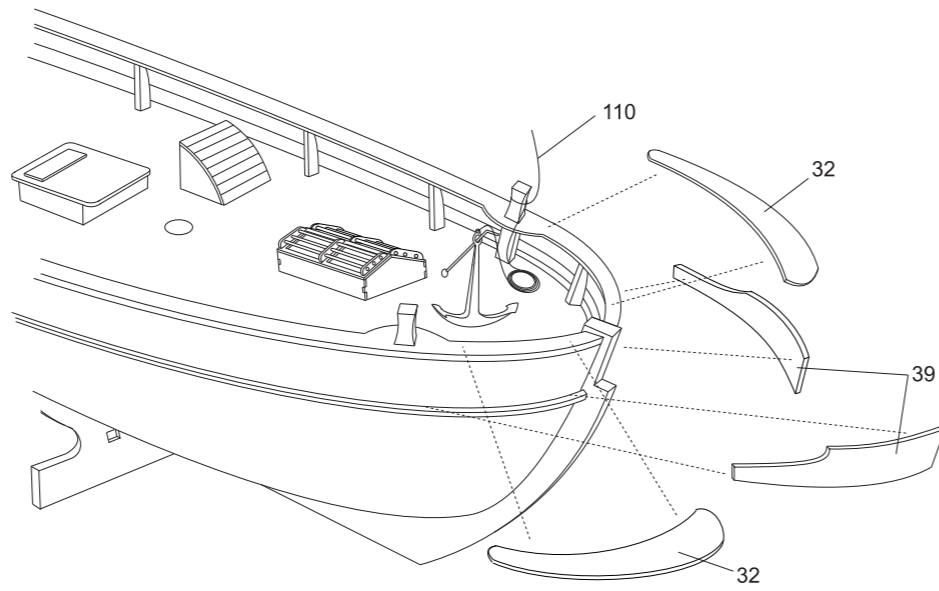
15



17

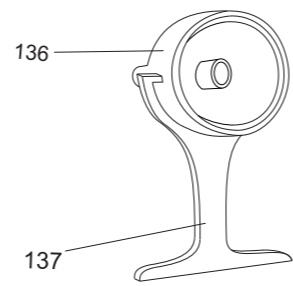
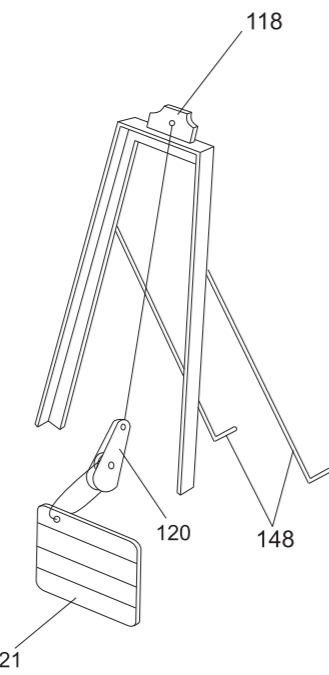
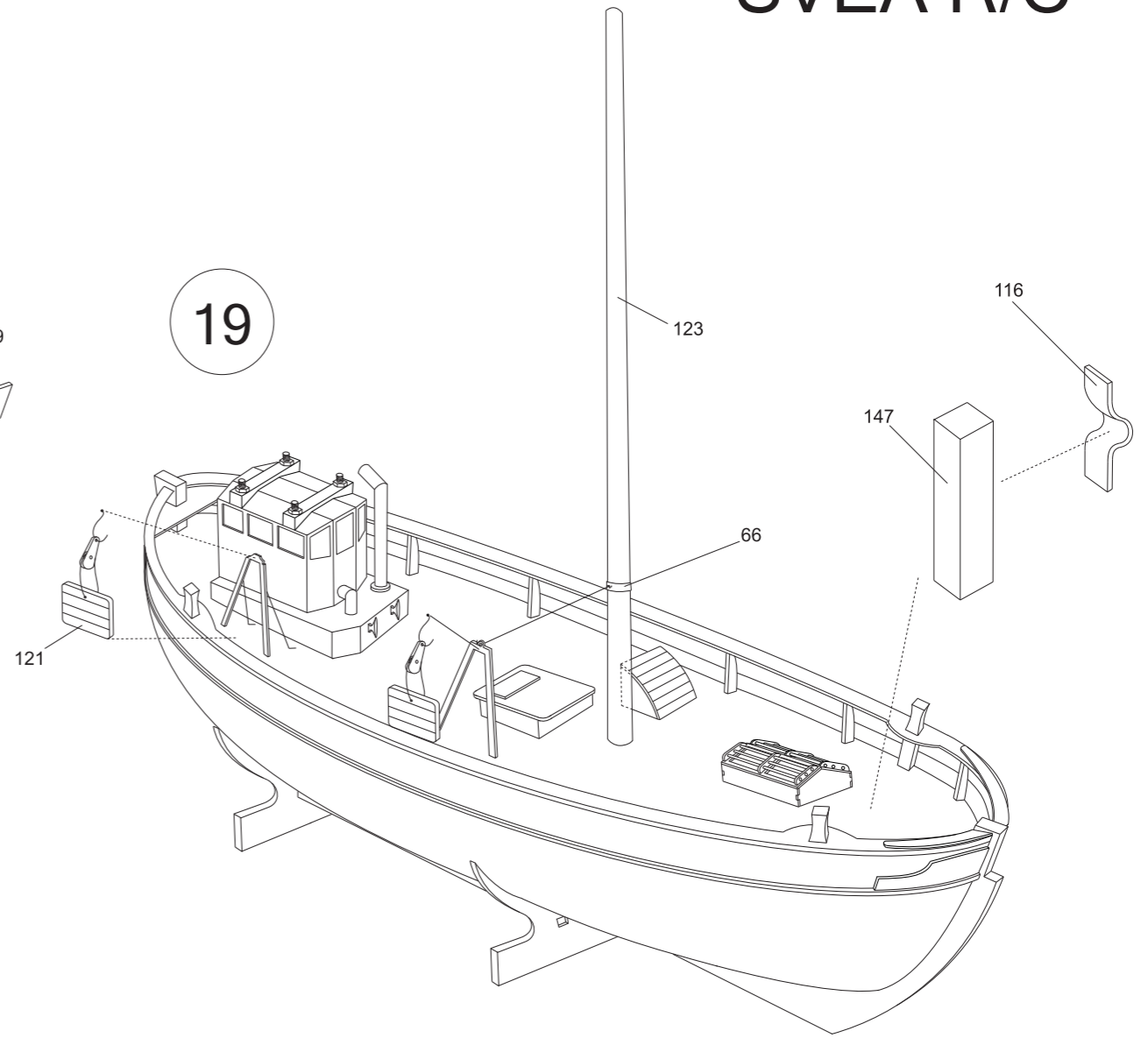


18

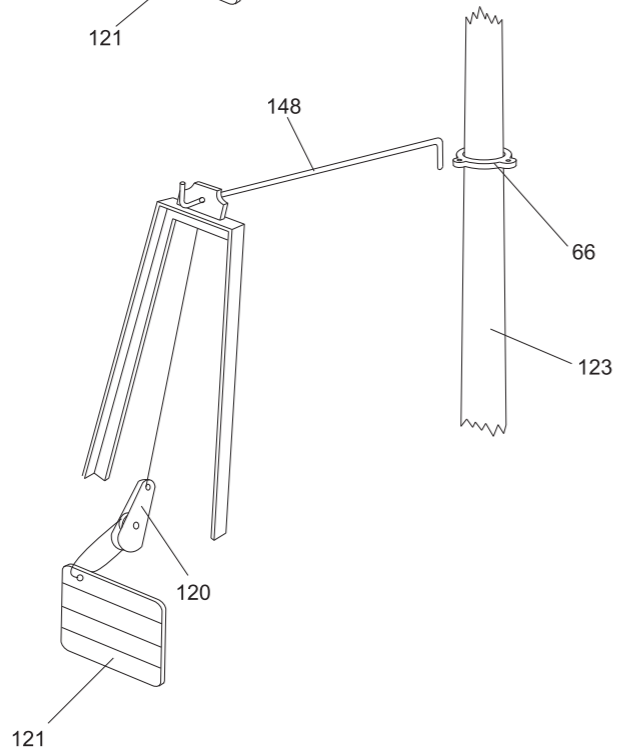


20

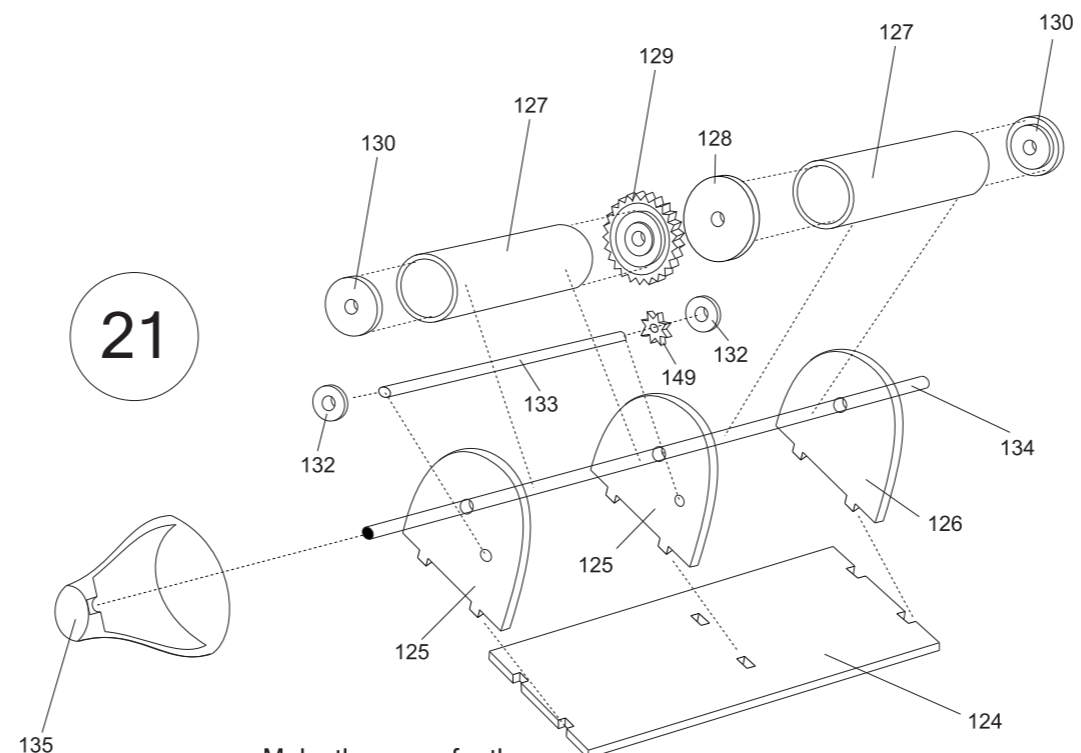
19



Place on top of the cabine anywhere.

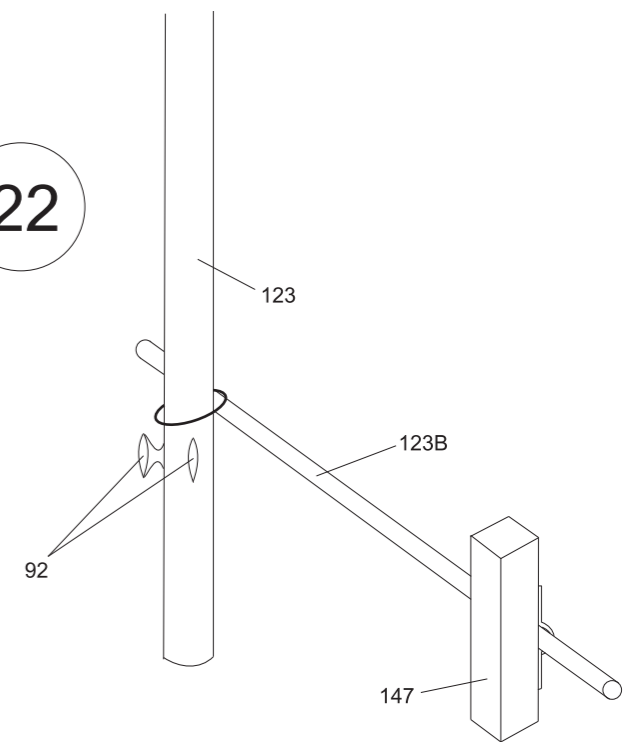


21

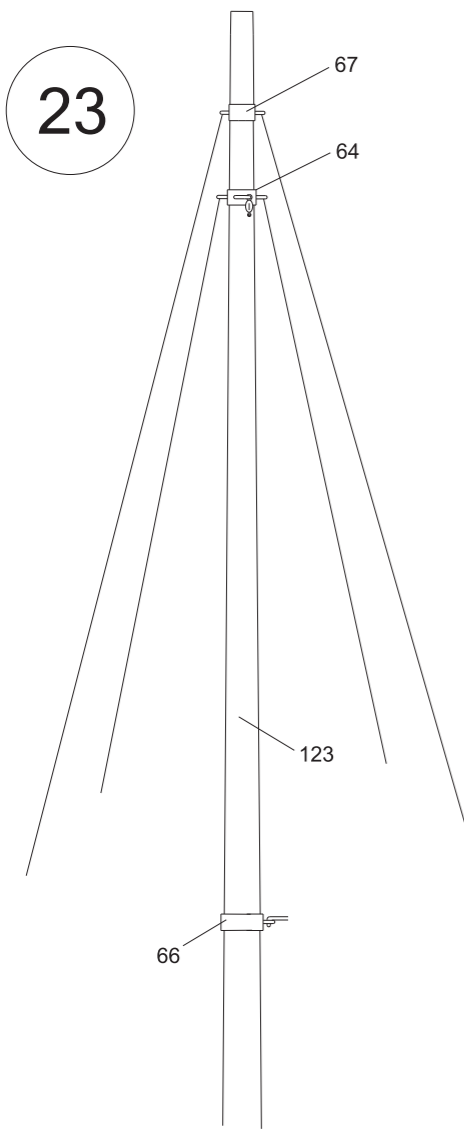


Make the same for the opposite side.

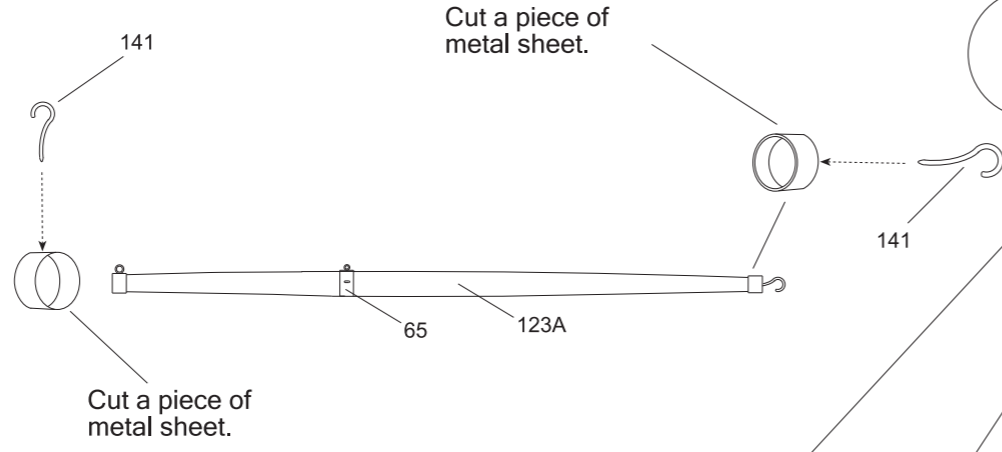
22



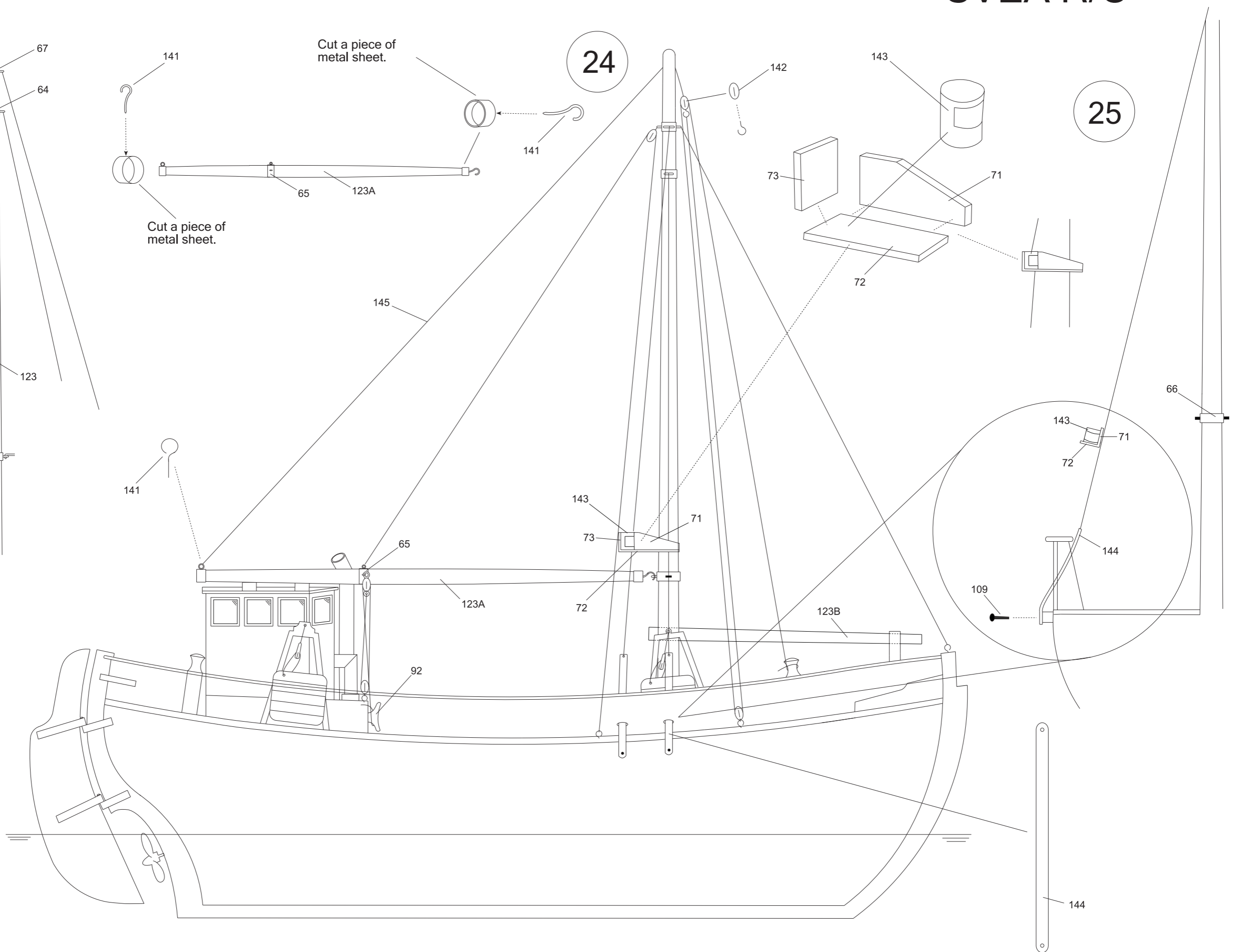
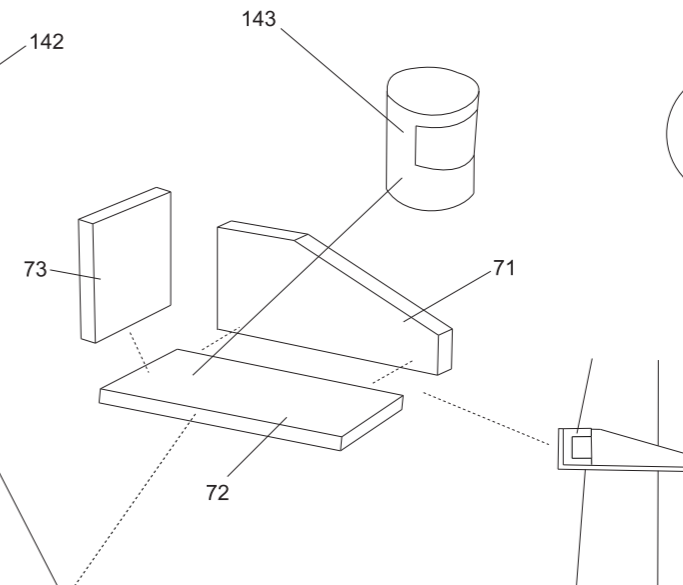
23

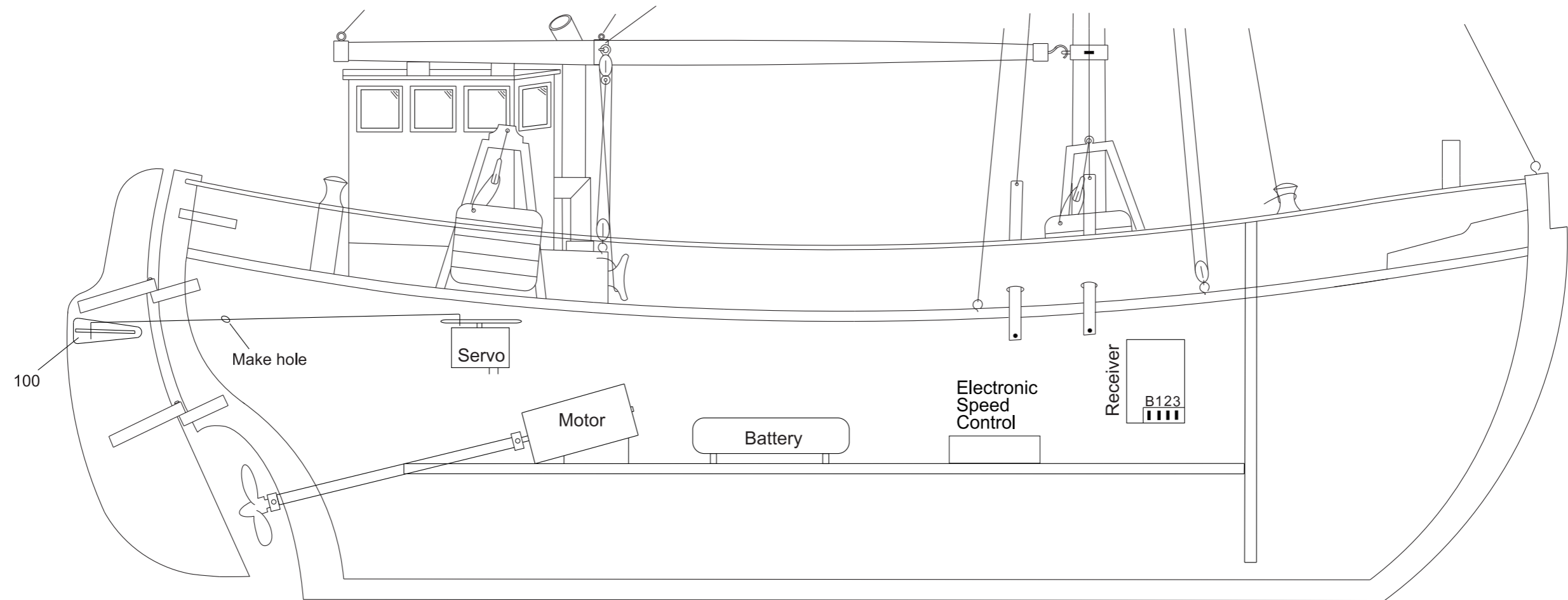


24



25





## R/C EQUIPMENT PLACEMENT

R/C device and its components are not included the kit.

## ASISTANT GUIDE

- ❖ Please read the instructions carefully before you start to build your model. Take notes if needed. So, you may find out the materials and the tools those you need.
- ❖ Use model knife to take out the parts the plywood sheets. Do not take them out with hand!
- ❖ Change of temperature effects on plywoods quickly. So that, do not release the plywoods. Keep them on a flat surface by putting weight on them.
- ❖ You may stick together the wooden parts easily if you sand the brown areas caused by laser with sand paper.
- ❖ You should use super glue and white glue to stick together the wooden parts and use the super glue for metal parts.
- ❖ Building the keel of your model, before stick the frames, be sure the frames properly seated on the keel. Otherwise you can't build the body of the model rightly. Exactly be sure that left and right side of the frames are compatible and symmetrical.
- ❖ After building the keel of your model, before the covering, you should test the frame edges by a cover strip. You should sand with a piece of sandpaper the frame edges at the right degree to touch the strips on to the surface exactly. The curves are mostly the front and back side of the body.
- ❖ You should keep the strip tips in the bowl filled with water approximately one hour. So that you may curve the strips on the curves easily these are mostly at the end and the front of the hull.
- ❖ You should cover the strip starting from the top for each side symmetrically.
- ❖ You should cut the upper side of the strip when overlap occurs especially at the front curve of the body.
- ❖ To make equal the surface of the body that caused by planking, you should sand with a piece of sandpaper (Firstly you should use thick sandpaper, then you can apply thin sandpaper), . You should fill the gaps after this processing. You may use leftover strips for wide gaps and model putty for small gaps.
- ❖ If you don't want to appear wooden tissue of the body of your model body; first, apply filler undercoat then sand with a thin sandpaper to make it ready to apply putty. Apply putty whole body and sandpaper again. Apply one more coat filler undercoat and sandpaper. You should not use very thick sandpaper to sand the putty and filler undercoat. You should repeat this process until you get the results as you want. You should apply undercoat paint to find out if any mistake appears at the body. The body gets ready for painting after these applications. You may use model brushes for filler coating. In order to understand whether the materials (such paint, filler, undercoat, varnish, etc.) are compatible with each other, you should test on the unnecessary parts.
- ❖ Some of the model's logo, name or the number are produced from decal paper. You should keep them in a bowl filled with warm water for two or three minutes. You should apply them to their places while releasing from their paper. You may attach easily If you apply gloss varnish to the place before applying the decals. You may apply matt, gloss or satin varnish after this application preferably.
- ❖ You should keep your model away from direct sunlight, heat and moist to avoid deformation in the course of time.



## SVEA R/C PART LIST

[www.turkmodel.net](http://www.turkmodel.net)  
[www.facebook.com/turkmodel](http://www.facebook.com/turkmodel)

Page 1

NO	QUANTITY	DESCRIPTION	SIZE	PART TYPE
1-2-3	3	Keel parts	5 mm	Plywood
4-5-6-7	4	Frames	5 mm	Plywood
7A	2	Frames	5 mm	Plywood
8-9-10	3	Frames	5 mm	Plywood
11-12	4	Frame supporters	5 mm	Plywood
11A	4	Lid holders	5 mm	Plywood
14A	1	Back deck	1,6 mm	Plywood
14B	1	Front deck	1,6 mm	Plywood
15	1	Back deck part	1,6 mm	Plywood
16...21	6	Cabine base parts	4 mm	Plywood
22-23	2	Cabine parts	4 mm	Plywood
23A	1	Cabine part	4 mm	Plywood
24-25-26	3	Cabine parts	4 mm	Plywood
27	2	Cabine roof sides	1,6 mm	Plywood
28	1	Cabine roof middle part	1,6 mm	Plywood
29-30-31	4	Cabinet parts	1,6 mm	Plywood
32	2	Rail front parts	1,6 mm	Plywood
33-34-35	5	Fore deck hatch parts	1,6 mm	Plywood
37-38	4	Fore deck hatch parts	1,6 mm	Plywood
39	2	Nose supporters	1,6 mm	Plywood
40	2	Fore deck hatch parts	1,6 mm	Plywood
41	6	Fore deck hatch bar holders	1,6 mm	Plywood
42	1	Rudder	5 mm	Plywood
43-44	2	R/C equipment base	4 mm	Plywood
45-46	2	Boat cockpit	1,6 mm	Plywood
47-48	4	Bulwark upper parts	1,6 mm	Plywood
49	1	Main door	1,6 mm	Plywood
50-51-52	3	Main door parts	1,6 mm	Plywood
53	11	Cabine glasses	-	Clear sheet
55	1	Cabine back window	1,6 mm	Plywood
56	4	Cabine's roof supporter parts	1,6 mm	Plywood
57	2	Cabine's roof supporter parts	1,6 mm	Plywood
58	4	Cabine's roof supporter parts	1,6 mm	Plywood
59	1	Cockpit cabinet lid frame	1,6 mm	Plywood
60	1	Cockpit cabinet lid	1,6 mm	Plywood
61	1	R/C equipment housing lid	1,6 mm	Plywood
62	1	Fore deck hatch upper part	1,6 mm	Plywood
64	1	4-hole post ring-large	Ready	Plexy-glass
65	1	3-hole post ring-small	Ready	Plexy-glass
66	1	3-hole post ring-large	Ready	3D Resin
67	1	4-hole post ring-small	Ready	Plexy-glass
69-70	2	Base plate legs	4 mm	Plywood
71-72-73	6	Board light holder parts	1,6 mm	Plywood
74	120	Planking strips	2x10x650 mm	Ayous strip
75	75	Deck planking strips	0,5x10x500 mm	Mahogany strip
76	4	Laths	4x4x650 mm	Baswood strip
77	4	Bollards	15x15x75 mm	Strip
78	6	Cabine side windows	1,6 mm	Plywood
79	1	Cabine front middle window	1,6 mm	Plywood
80	2	Cabine front edge windows	1,6 mm	Plywood
81A-B-C	3	Indicators	-	Printed paper
82	2	Main door hinge-female	-	3D Resin
83	2	Main door hinge-male	-	3D Resin
84	1	Main door handle	-	3D Resin
85	1	Rudder wheel	-	3D Resin
86	1	Large indicator	-	3D Resin
87	1	Small indicator	-	3D Resin

NO	QUANTITY	DESCRIPTION	SIZE	PART TYPE
88	1	Compass	-	3D Resin
89-90-91	3	Accelerator control parts	-	3D Resin
92	5	Cleats	-	3D Resin
93A-B	4	Liferings	-	3D Resin
94	-	Liferings holder	-	Metal sheet
95	4	Nuts	Ready	Metal
96	1	Funnel base	-	3D Resin
97-97A	2	Funnel	Ready	Pipe
98-98A	2	Heating pipe	Ready	Pipe
99	6	Fore deck hatch bars	2x78 mm	Wire
100	1	Rudder servo connector	-	3D Resin
101	2	Rudder hinges-male	-	3D Resin
102	2	Rudder hinges-female	-	3D Resin
104A-B-C-D	1	Propeller	-	3D Resin
106	1	Anchor	-	3D Resin
108	1	Anchor bar	-	3D Resin
109	4	Pin	-	Metal
110	1	Anchor rope	-	Waxed rope
116	1	Metal sheet	-	Metal sheet
118	2	Lid holders	-	3D Resin
120	2	Reels	-	3D Resin
121	2	Lids	4 mm	Plywood
123	1	Main post	8x800 mm	Dowel strip
123A	1	Boom-long	10x540 mm	Dowel strip
123B	1	Front boom-short	8x320 mm	Dowel strip
124	1	Winch base	-	Plexy-glass
125	2	Winch middle and side fixer part	-	Plexy-glass
126	1	Winch side fixer part	-	Plexy-glass
127	2	Winch middle parts	16x41 mm	Pipe
128	1	Winch middle roller parts fixer-large	-	3D Resin
129	1	Winch main gear	-	3D Resin
130	2	Winch middle roller parts fixers-small	-	3D Resin
132	2	Winch middle roller parts fixers-small	-	Plexy-glass
133	1	Winch shaft-short	2,5x90 mm	Wire
134	1	Winch shaft-long	3x133 mm	Wire
135	2	Winch heads	-	3D Resin
136	1	Search light	-	3D Resin
137	1	Search light leg	-	3D Resin
138	2	Base plate fixer parts	10x10x125 mm	Baswood strip
139	1	Cabinet upper part	1,6 mm	Plywood
140	1	Cabinet lid	Ready	Mahogany
141	12	Eyebolts	-	Metal
142	12	Single-hole blocks	-	Walnut
143	2	Board lights	-	3D Resin
144	4	Chain plates	0,8 mm	PVC
145	1	Rope	-	Yarn
147	1	Horizantal post fixer bollard	15x15x85 mm	Baswood strip
148	1	Wire	0,8 mm	Wire
149	1	Winch small gear	-	3D Resin

## GULLMAR PARA LİSTESİ

NO	PARA ADEDİ	AIKLAMA	EBAT	MALZEME CİNSİ
1	1	Omurga	4 mm	Kontraplak
2 - 8	7	Postalar	4 mm	Kontraplak
9	2	Burun Takozu	4 mm	Kontraplak
10	2	Kı Takozu	4 mm	Kontraplak
11	1	Güverte	1,6 mm	Kontraplak
12	-	ıta	4x4 mm	İhlamur
13	-	Sarma ıtası	1,5x4 mm	Ayos
14	-	Kaplama ıtası	0,5x4 mm	Ayos
15	2	Küpeşte üst paraları	1,6 mm	Kontraplak
16	1	Kı güverte	1,6 mm	Kontraplak
17	-		1x3 mm	Maun
18	4	Vida görünümlü paralar	-	Metal
19 - 24	6	Kamara alt paraları	1,6 mm	Kontraplak
25 - 29	8	Kamara paraları	1,6 mm	Kontraplak
30	1	Kamara kapısı	1,6 mm	Kontraplak
31	-		1x1 mm	Maun
32	-		3x4 mm	Maun
33 - 35	5	Orta ambar paraları	1,6 mm	Kontraplak
35A	1	35 Nolu kapak üstü	1,6 mm	Kontraplak
36	2	Kaide	4 mm	Kontraplak
37	1	Baca	-	Metal
37A	1	Baca dirseđi	-	Metal
38	2	Boru sabitleme parası	-	Metal
39	1	Isıtma borusu	-	Metal
39A	1	Isıtma borusu dirseđi	-	Metal
40	1	Can simidi	-	Metal
41	-		-	İhlamur
42	-		-	-
43	2		1,6 mm	Kontraplak
44	4	Ko boynuzu	-	Metal
45	1		-	Metal
46	2	Calaskar makarası	-	Metal
47	1		3 mm	Ahşap
48 - 49	3		1,6 mm	Kontraplak
50	1	Bađlantı parası	-	Metal
51	1		5x4 mm	Maun
52 - 54	6		1,6 mm	Kontraplak
55	-		1x2 mm	İhlamur
56	-		1x2 mm	Maun
57	1	Direk ıtası	6 mm	Ahşap
58	1	Direk seren ıtası	3 mm	Ahşap
59	12	Mapa	-	Metal
60	-	Bakır levha	-	Metal
61-64	8	Irgat paraları	-	Metal
65	2	4 delikli halka	-	Metal
66	1	Oksijen tüpü	-	Metal
67	2	3 delikli halka	-	Metal
68	12	Tekli makara	-	Ahşap
69	6	ivi	-	Metal
70	4	Dümen menteşesi	-	Metal

71	1	Pervane	-	Metal
72	2	Borda feneri	-	Metal
73	2		1,6 mm	Kontraplak
74	2		1,6 mm	Kontraplak
76	-	Tel	-	Metal
77	-	İp	-	-
78	4	Armadora çeliği	-	Metal
79	-		1,5x1,5 mm	Ihlamur