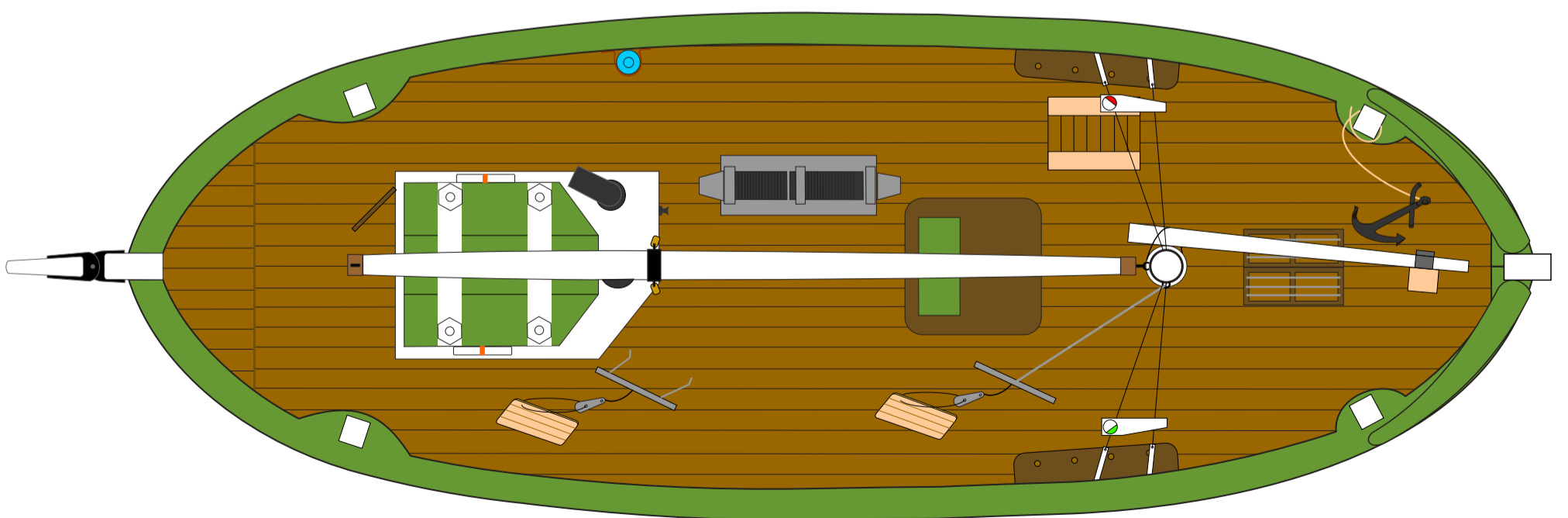
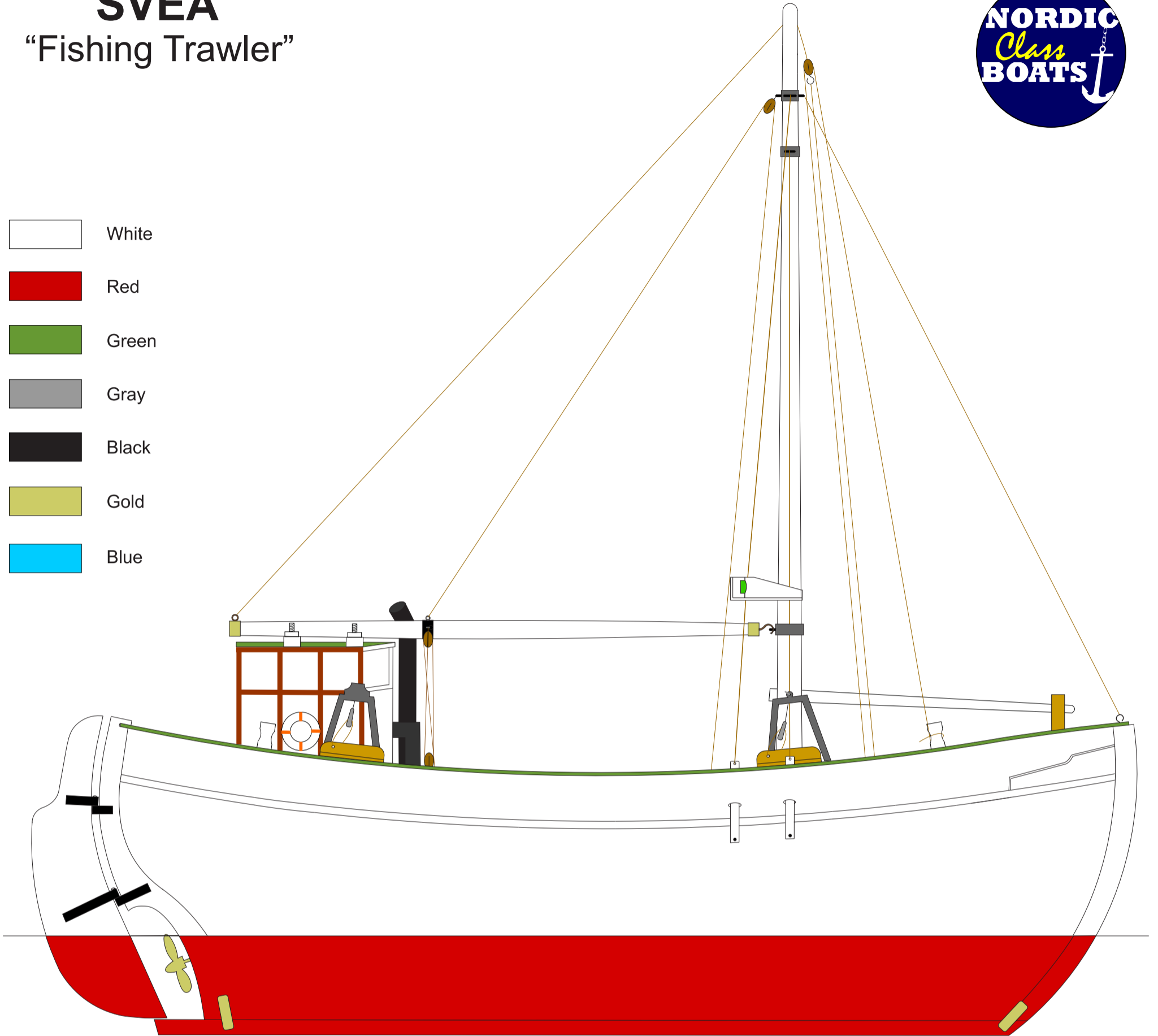


SVEA

“Fishing Trawler”

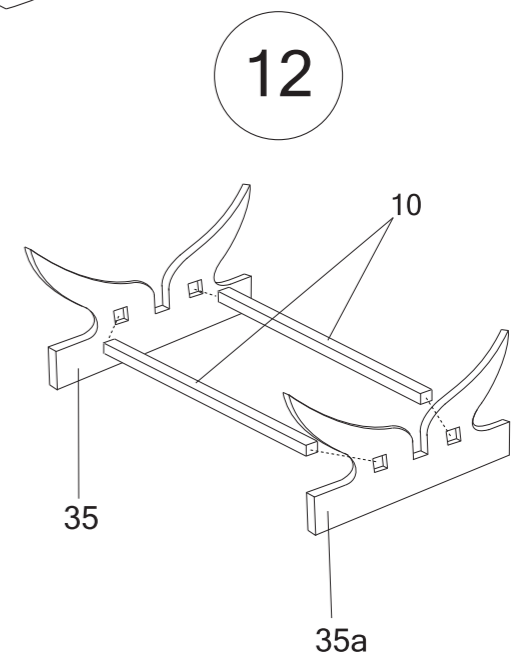
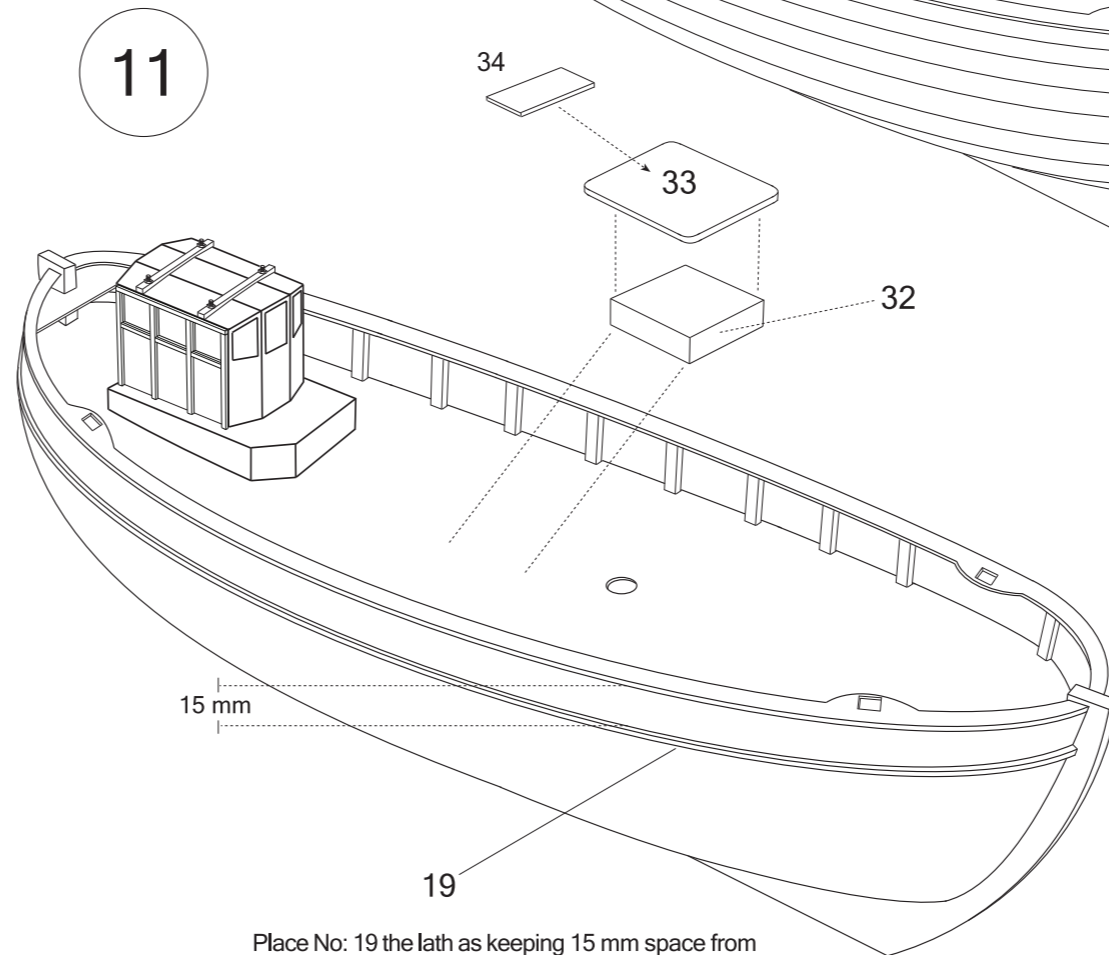
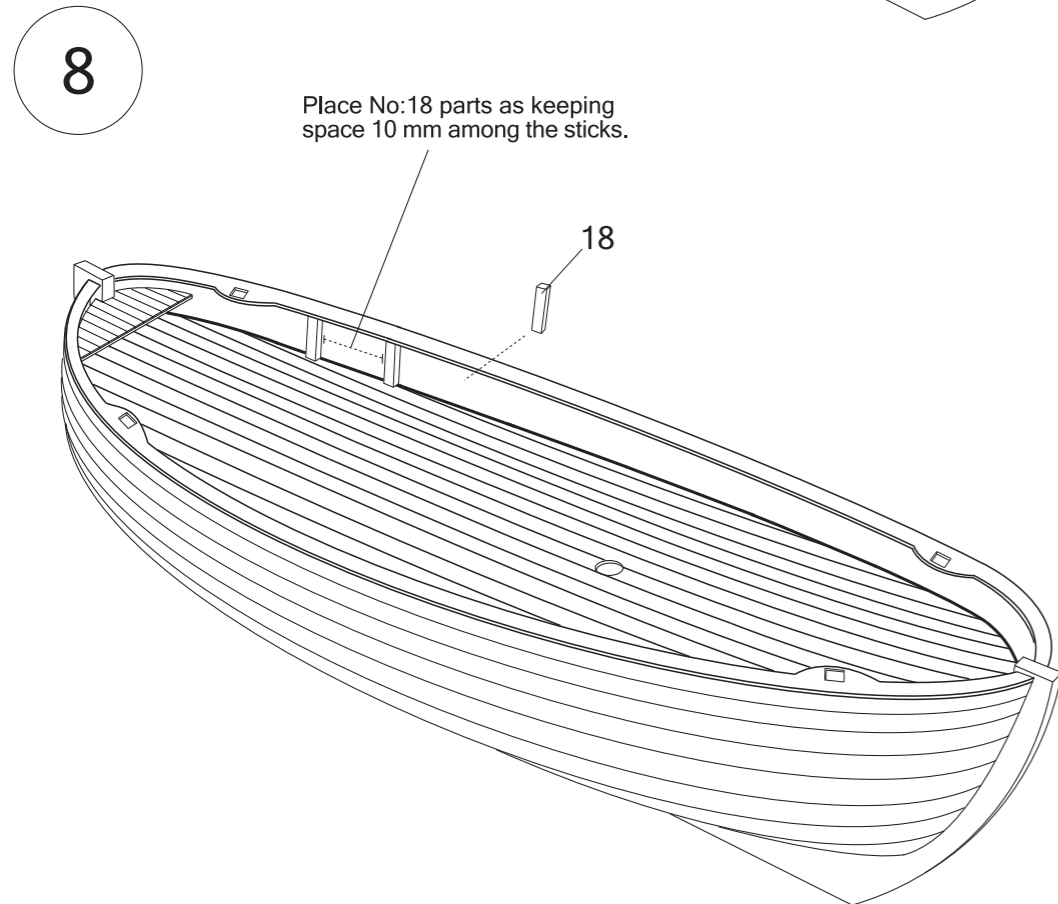
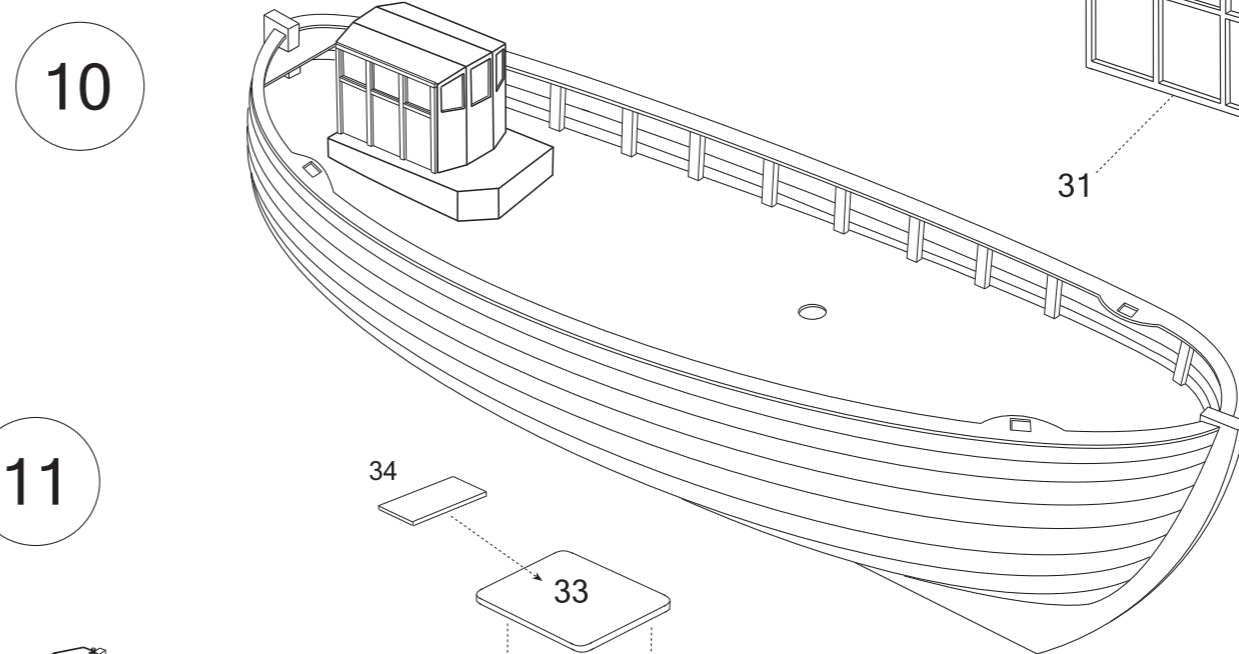
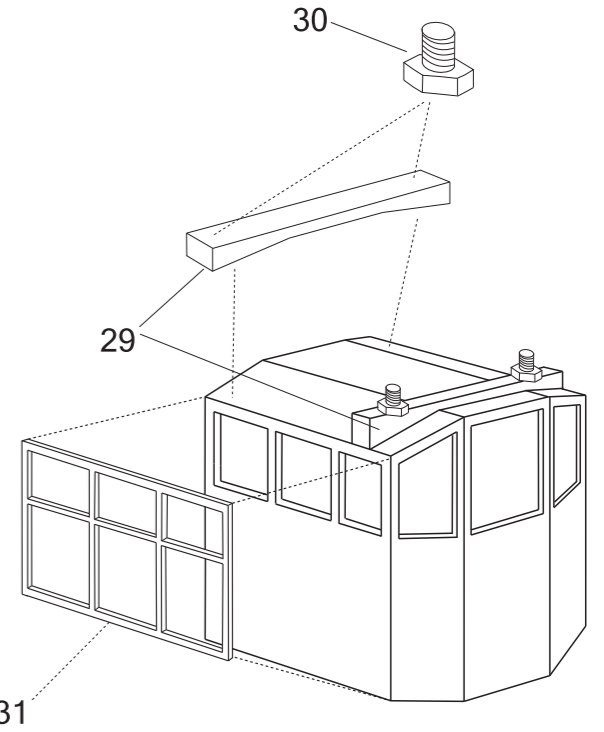
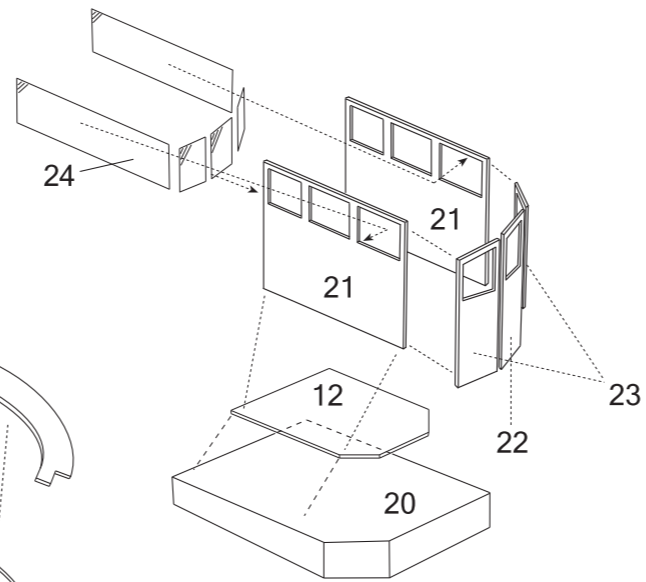
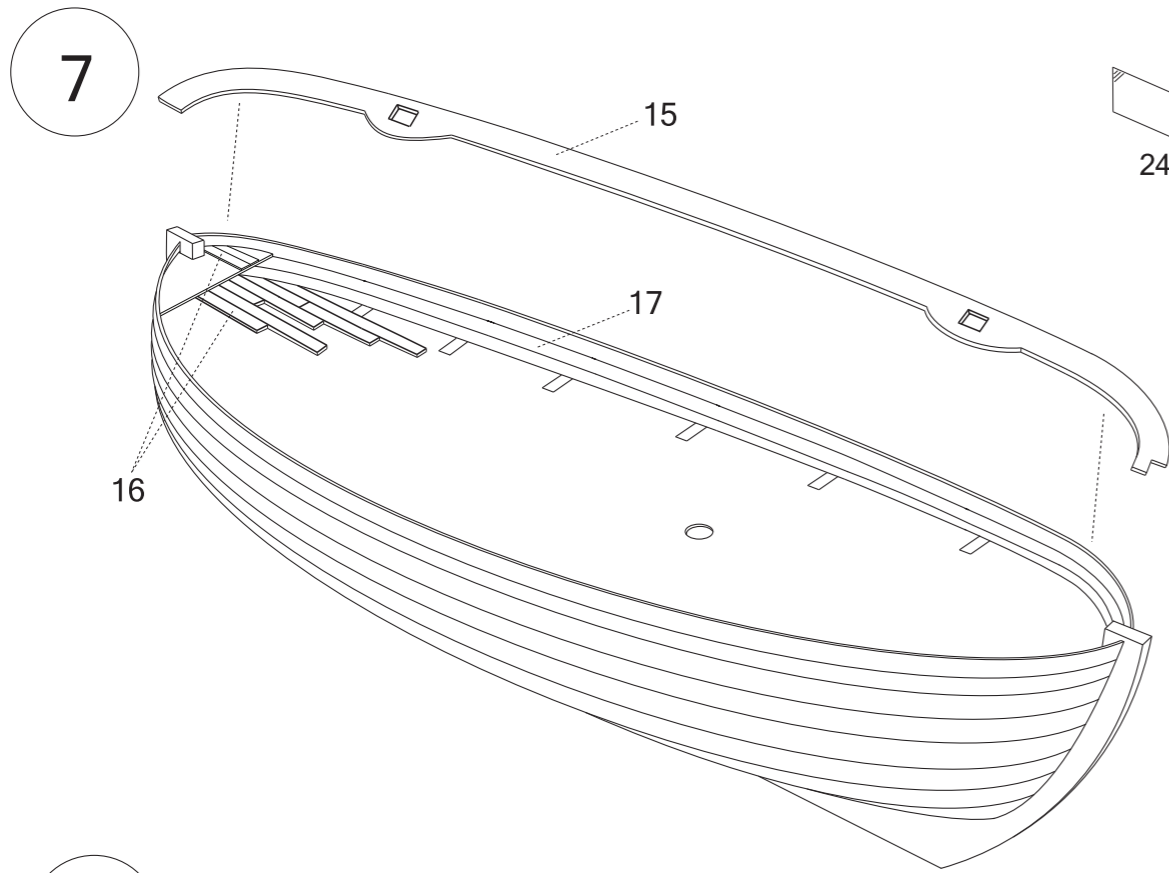


- White
- Red
- Green
- Gray
- Black
- Gold
- Blue



SVEA

"Fishing Trawler"

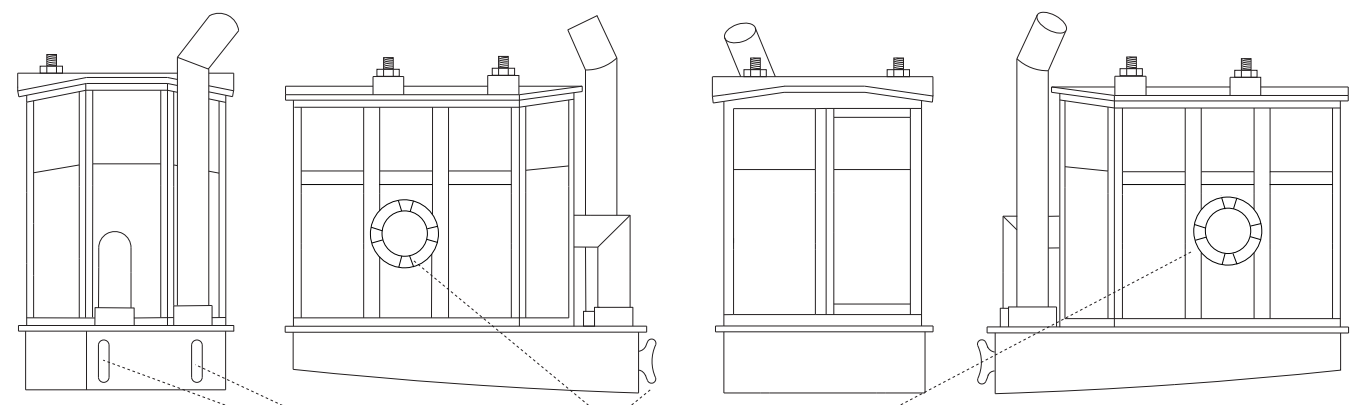


Place No: 19 the lath as keeping 15 mm space from the top of the bulwark.

SVEA

"Fishing Trawler"

13

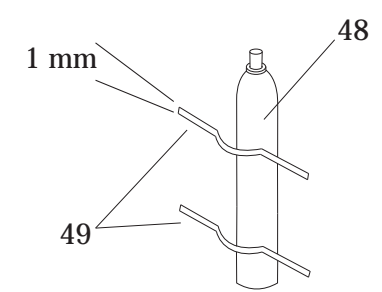
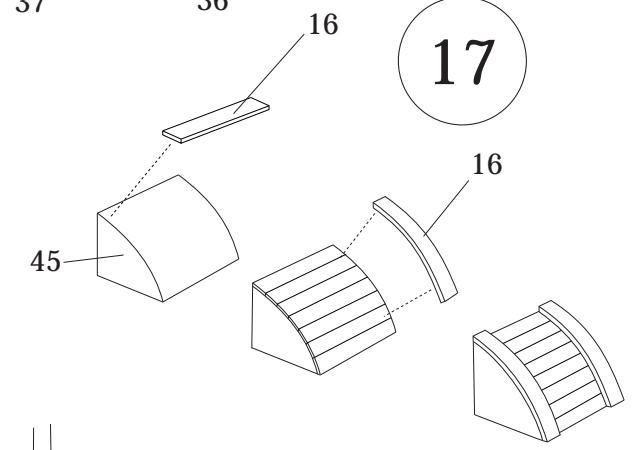


front

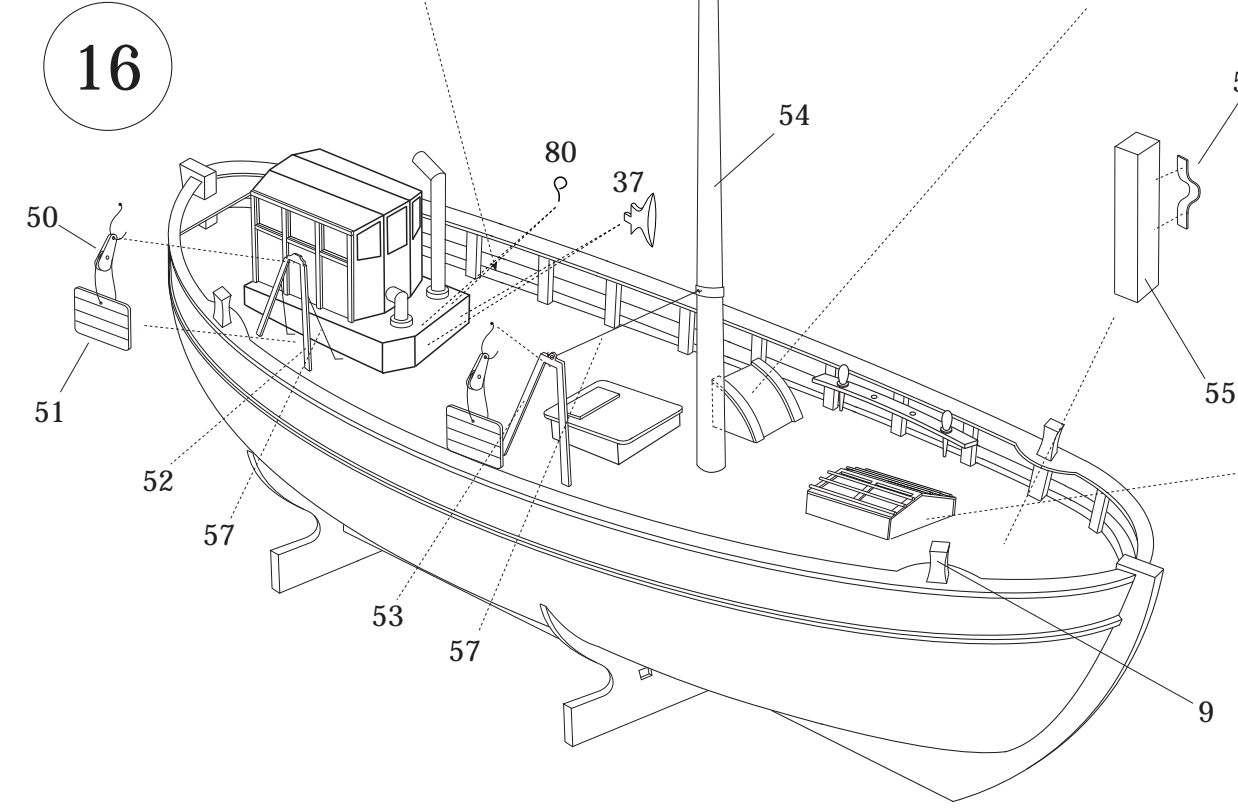
back



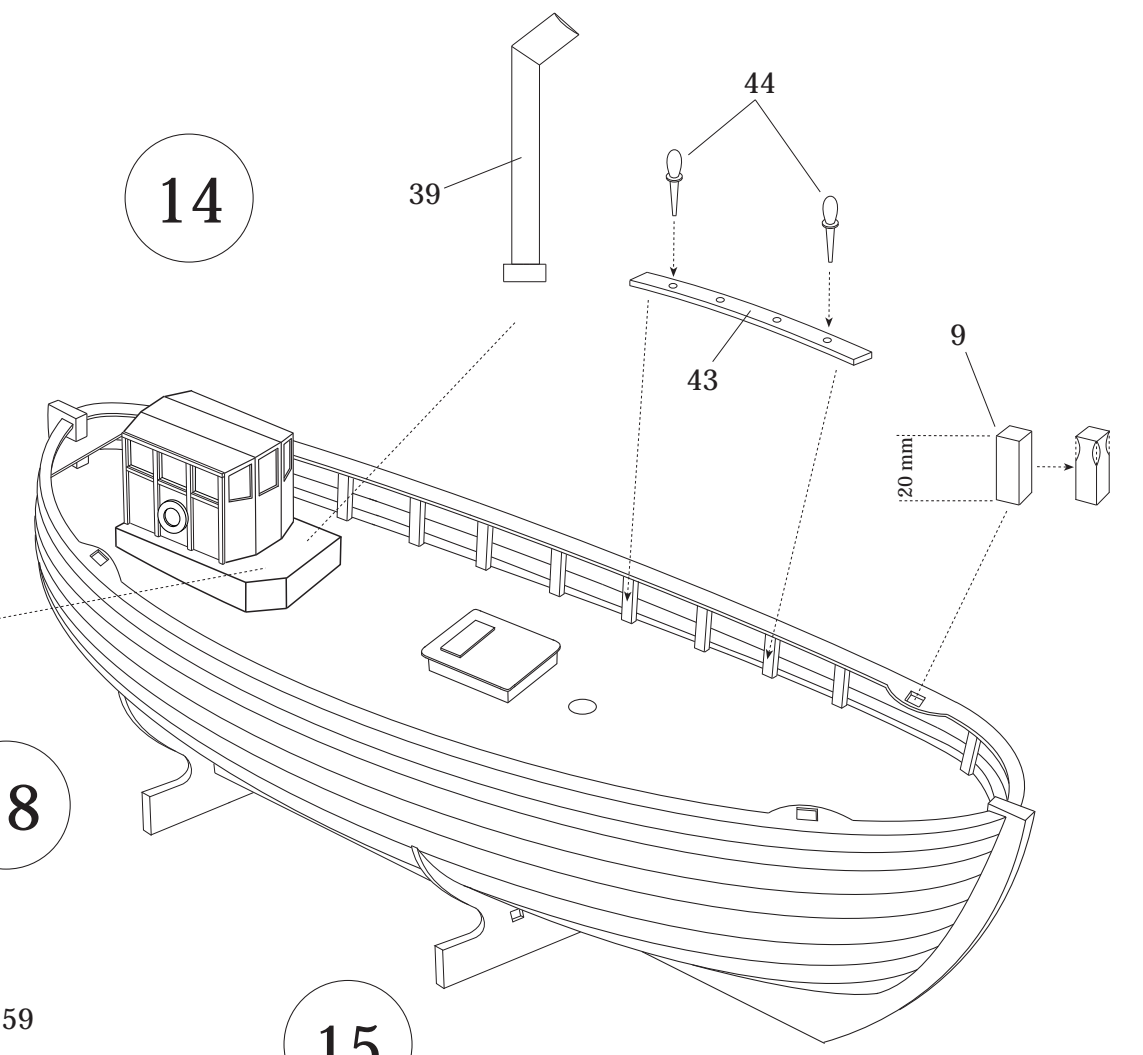
17



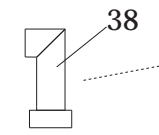
16



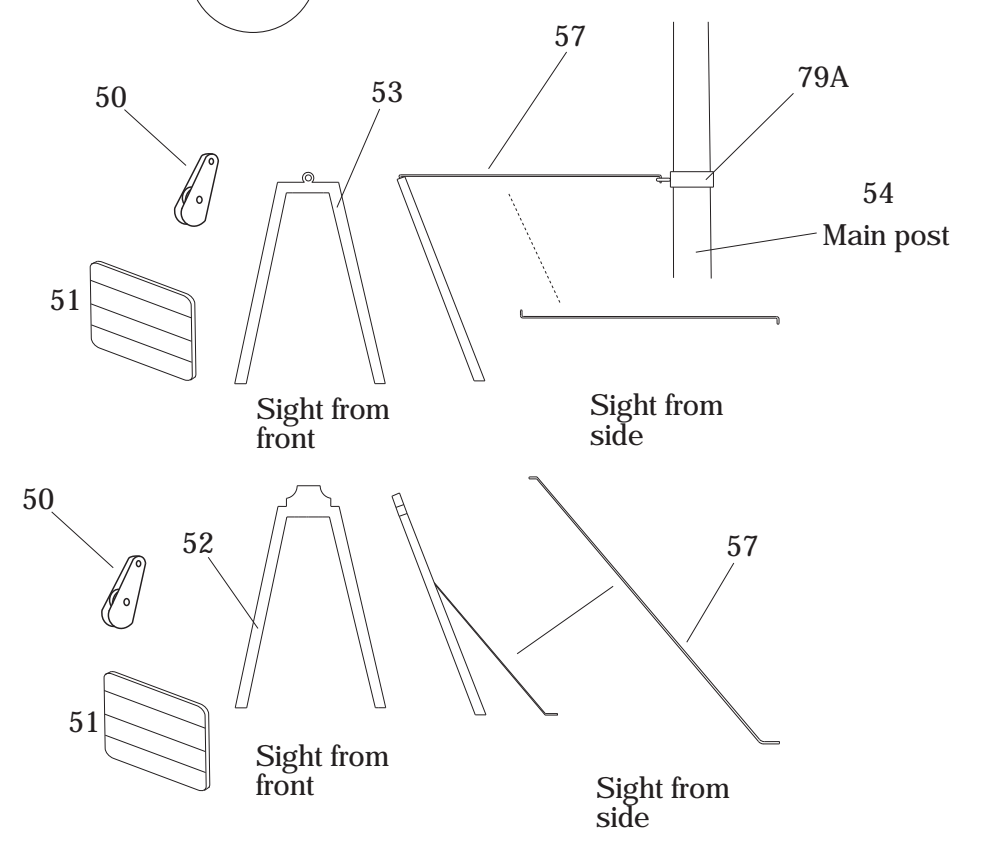
14



18



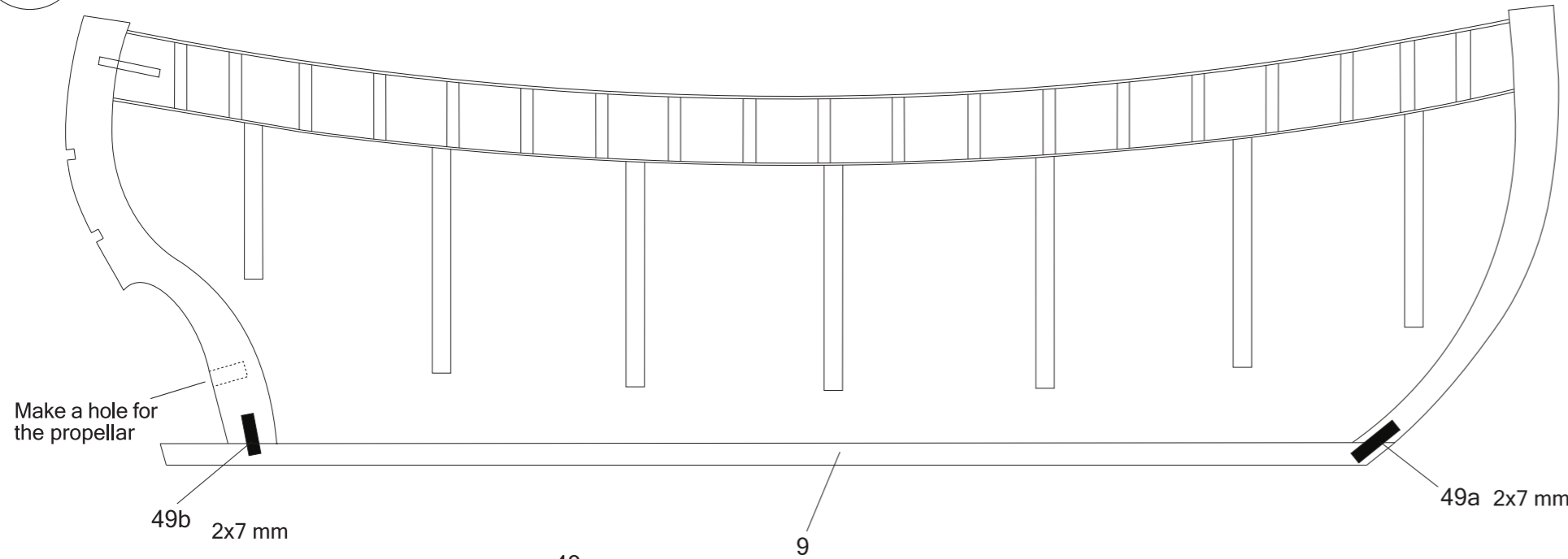
15



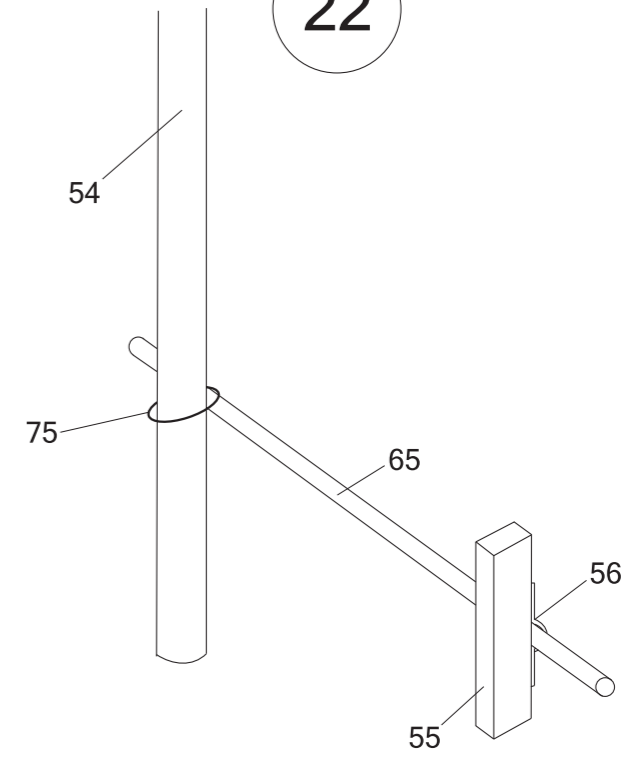
SVEA

"Fishing Trawler"

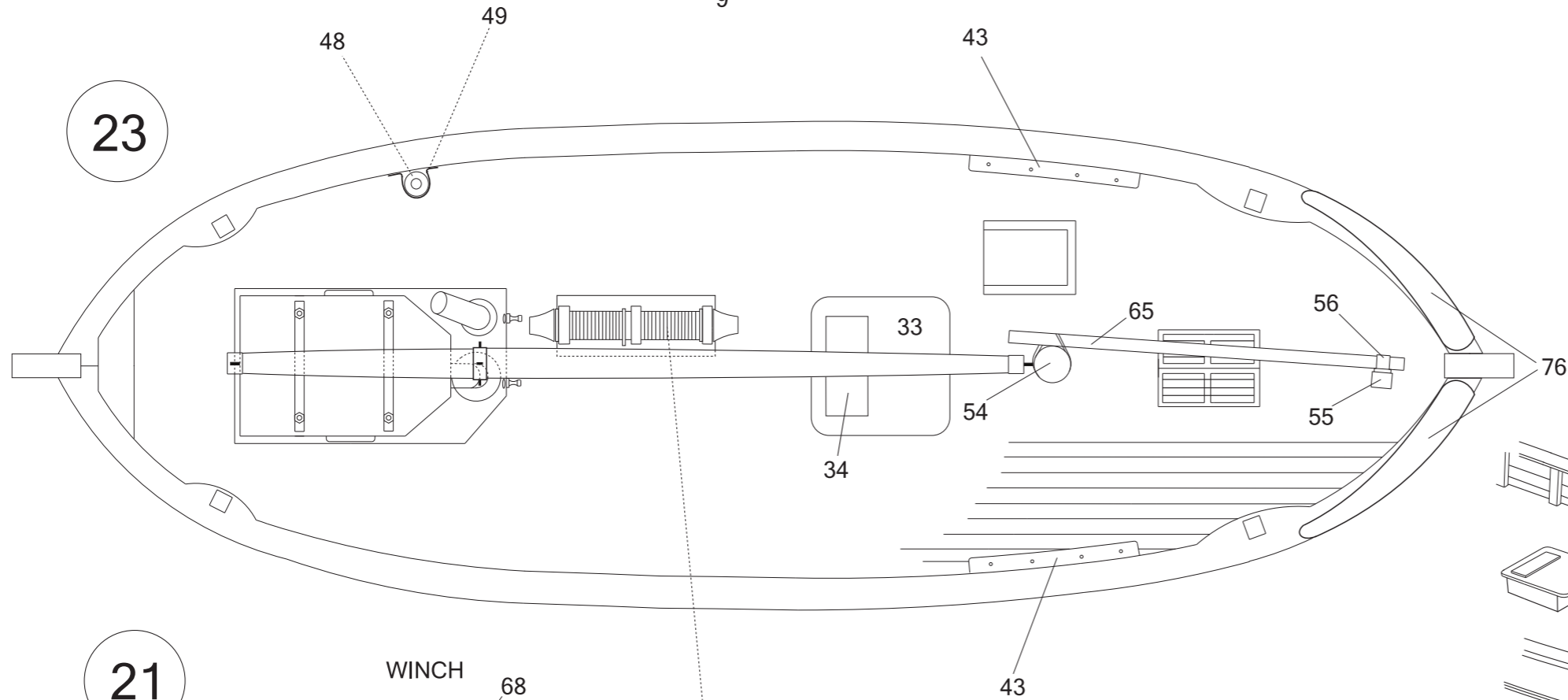
19



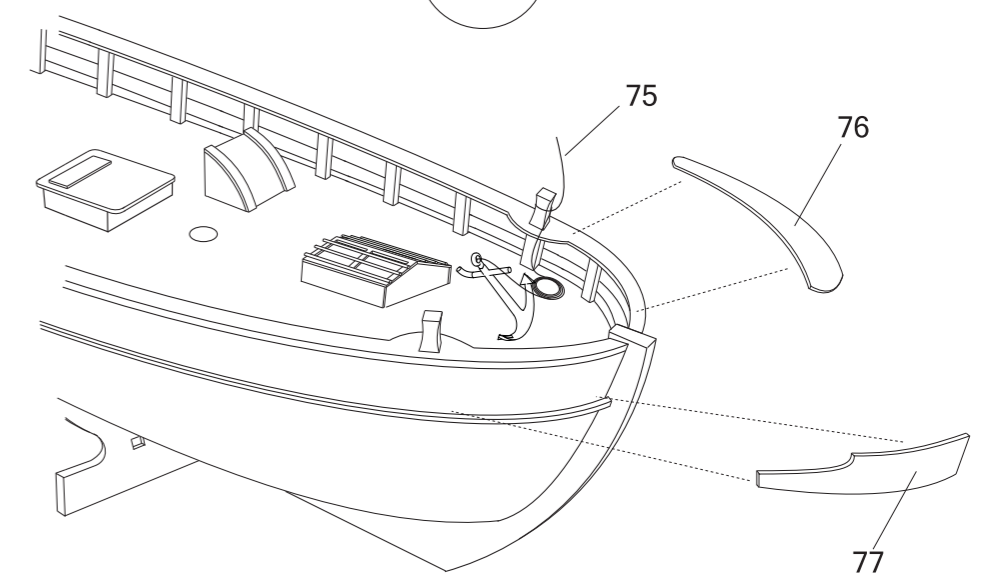
22



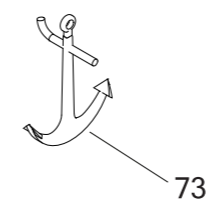
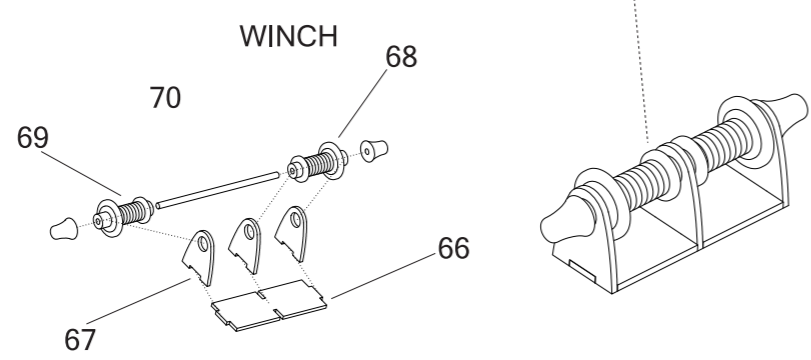
23



20

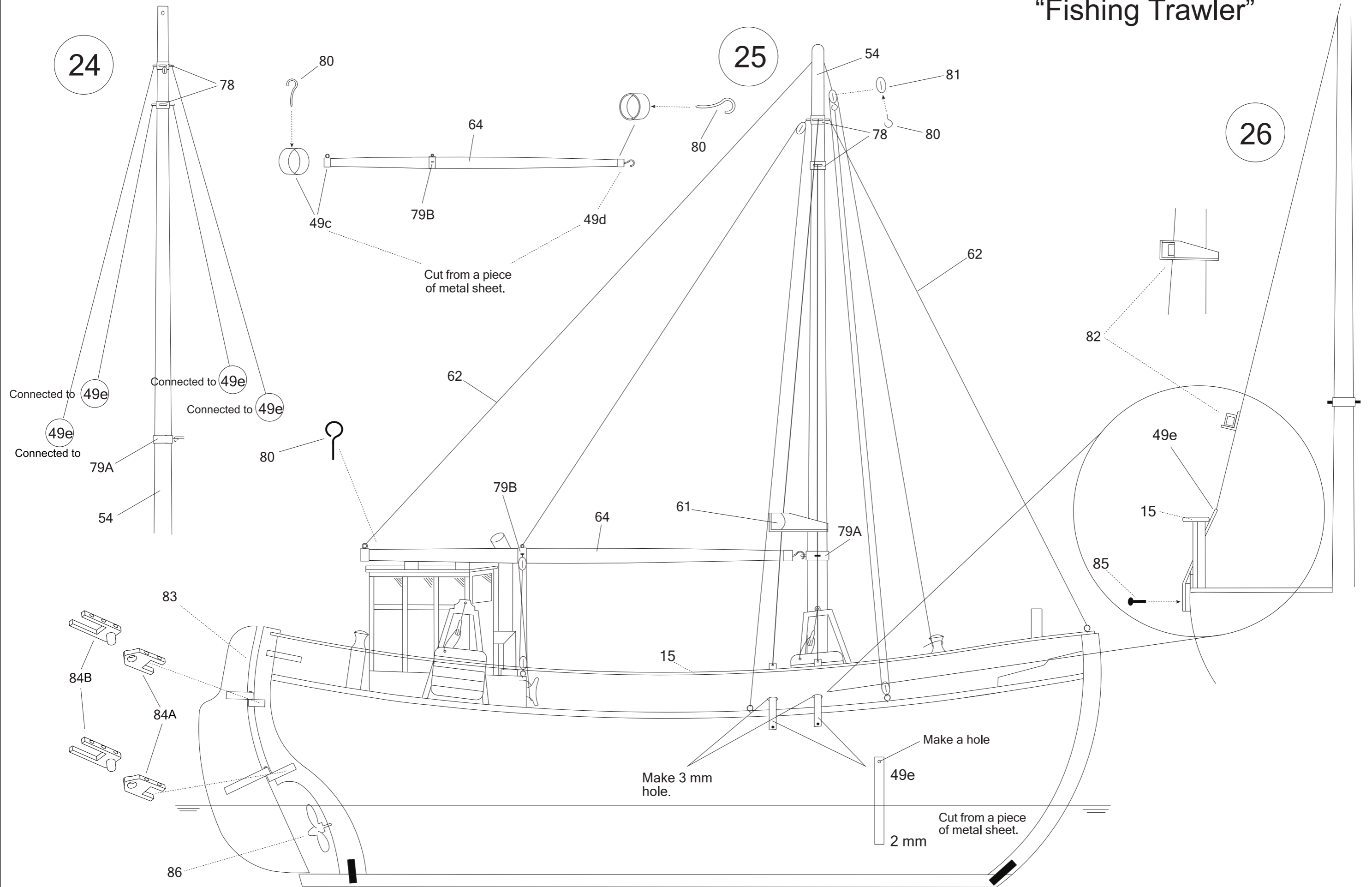


21



SVEA

"Fishing Trawler"



ASISTANT GUIDE

- ❖ Please read the instructions carefully before you start to build your model. Take notes if needed. So, you may find out the materials and the tools those you need.
- ❖ Use model knife to take out the parts the plywood sheets. Do not take them out with hand!
- ❖ Change of temperature effects on plywoods quickly. So that, do not release the plywoods. Keep them on a flat surface by putting weight on them.
- ❖ You may stick together the wooden parts easily if you sand the brown areas caused by laser with sand paper.
- ❖ You should use super glue and white glue to stick together the wooden parts and use the super glue for metal parts.
- ❖ Building the keel of your model, before stick the frames, be sure the frames properly seated on the keel. Otherwise you can't build the body of the model rightly. Exactly be sure that left and right side of the frames are compatible and symmetrical.
- ❖ After building the keel of your model, before the covering, you should test the frame edges by a cover strip. You should sand with a piece of sandpaper the frame edges at the right degree to touch the strips on to the surface exactly. The curves are mostly the front and back side of the body.
- ❖ You should keep the strip tips in the bowl filled with water approximately one hour. So that you may curve the strips on the curves easily these are mostly at the end and the front of the hull.
- ❖ You should cover the strip starting from the top for each side symmetrically.
- ❖ You should cut the upper side of the strip when overlap occurs especially at the front curve of the body.
- ❖ To make equal the surface of the body that caused by planking, you should sand with a piece of sandpaper (Firstly you should use thick sandpaper, then you can apply thin sandpaper), . You should fill the gaps after this processing. You may use leftover strips for wide gaps and model putty for small gaps.
- ❖ If you don't want to appear wooden tissue of the body of your model body; first, apply filler undercoat then sand with a thin sandpaper to make it ready to apply putty. Apply putty whole body and sandpaper again. Apply one more coat filler undercoat and sandpaper. You should not use very thick sandpaper to sand the putty and filler undercoat. You should repeat this process until you get the results as you want. You should apply undercoat paint to find out if any mistake appears at the body. The body gets ready for painting after these applications. You may use model brushes for filler coating. In order to understand whether the materials (such paint, filler, undercoat, varnish, etc.) are compatible with each other, you should test on the unnecessary parts.
- ❖ Some of the model's logo, name or the number are produced from decal paper. You should keep them in a bowl filled with warm water for two or three minutes. You should apply them to their places while releasing from their paper. You may attach easily If you apply gloss varnish to the place before applying the decals. You may apply matt, gloss or satin varnish after this application preferably.
- ❖ You should keep your model away from direct sunlight, heat and moist to avoid deformation in the course of time.

SVEA PART LIST

www.turkmodel.net				
www.facebook.com/turkmodel				
NO	QUANTITY	DESCRIPTION	SIZE	TYPE
1	1	Keel	4 mm	Plywood
2...8	7	Frames	4 mm	Plywood
9	-	Strips	4x4 mm	Baswood strip
10	2	Base plate supporters	4 mm	Plywood
11	1	Main deck	1,6 mm	Plywood
12	1	Cabin bottom part	1,6 mm	Plywood
13	44	Cover strips	1,5x4x300 mm	Ayous strip
14	1	Back deck part	1,6 mm	Plywood
15	2	Bulwark upper parts	1,6 mm	Plywood
16	30	Second cover strips	0,5x4x300 mm	Mahogany strip
17	10	Second cover strips	0,5x4x300 mm	Ayous strip
18	1	Strips	1x3x300 mm	Mahogany strip
19	2	Laths	1x1x350 mm	Baswood strip
20	1	Cabin block bottom	Ready	Wooden
21...23	5	Cabin parts	1,6 mm	Plywood
24	1	Glasses	-	Clear sheet
25...27	4	Cabin parts	1,6 mm	Plywood
28	1	Cabin door	0,5 mm	Wooden sheet
29	2	Roof supporter parts	Ready	Wooden
30	4	Turnscrew	-	White metal
31	2	Frame	0,5 mm	Wooden sheet
32	1	Middle hatch block	Ready	Wooden
33-34	2	Middle hatch parts	1,6 mm	Plywood
35-35A	2	Base plate	4 mm	Plywood
36	2	Liferings	-	3D print-out
37	2	Cleats	-	3D print-out
38	1	Funnel	-	3D print-out
39	1	Funnel	-	3D print-out
43	2	Pinrack beds	1,6 mm	Plywood
44	8	Pinracks	-	Walnut
45	1	Middle hatch block	Ready	Wooden
48	1	Tank	-	3D print-out
49	-	Tank belts	-	Metal sheet
49A	-	Fore keel corner part	-	Metal sheet
49B	-	Back keel corner part	-	Metal sheet
49C	-	Back horizontal post tip	-	Metal sheet
49D	-	Back horizontal post end	-	Metal sheet
49E	-	Chain plate	-	Metal sheet
50	2	Reels	-	3D print-out
51	2	Lids	1,6 mm	Plywood
52	1	Lid leg	-	3D print-out
53	1	Lid leg-hole	-	3D print-out
54	1	Main post	6x210 mm	Dowel strip
55	1	Front horizontal post supporter	4x5x100 mm	Baswood strip
56	1	Front horizontal post immobilizer	-	Metal sheet
57	1	Wire	0,5x200 mm	Wire
58...60	6	Fore deck hatch parts	1,6 mm	Plywood
61	2	Board lights	-	3D print-out
62	1	Rope	-	Yarn
64	1	Back horizontal post	5x135 mm	Dowel strip
65	1	Front horizontal post	3x70 mm	Dowel strip
66-67	4	Winch parts	1 mm	Plexy-glass
68-69	4	Winch parts	-	3D print-out
70	1	Winch axle	1,5x40 mm	Metal
73	1	Anchor	-	3D print-out
75	1	Anchor rope	-	Waxed rope
76	2	Front bulwark parts	1,6 mm	Plywood
77	2	Front bulwark parts	1,6 mm	Plywood
78	2	4-hole post ring	1 mm	Plexy-glass
79A	1	3-hole post ring	1 mm	Plexy-glass
79B	1	3-hole post ring	1 mm	Plexy-glass
80	7	Eyebolt	-	Metal
81	7	single-hole blocks	-	Walnut
83	1	Rudder	4 mm	Plywood
84A-B	4	Rudder hinge	-	3D print-out
85	4	Pins	-	3D print-out
86	1	Propeller	-	3D print-out