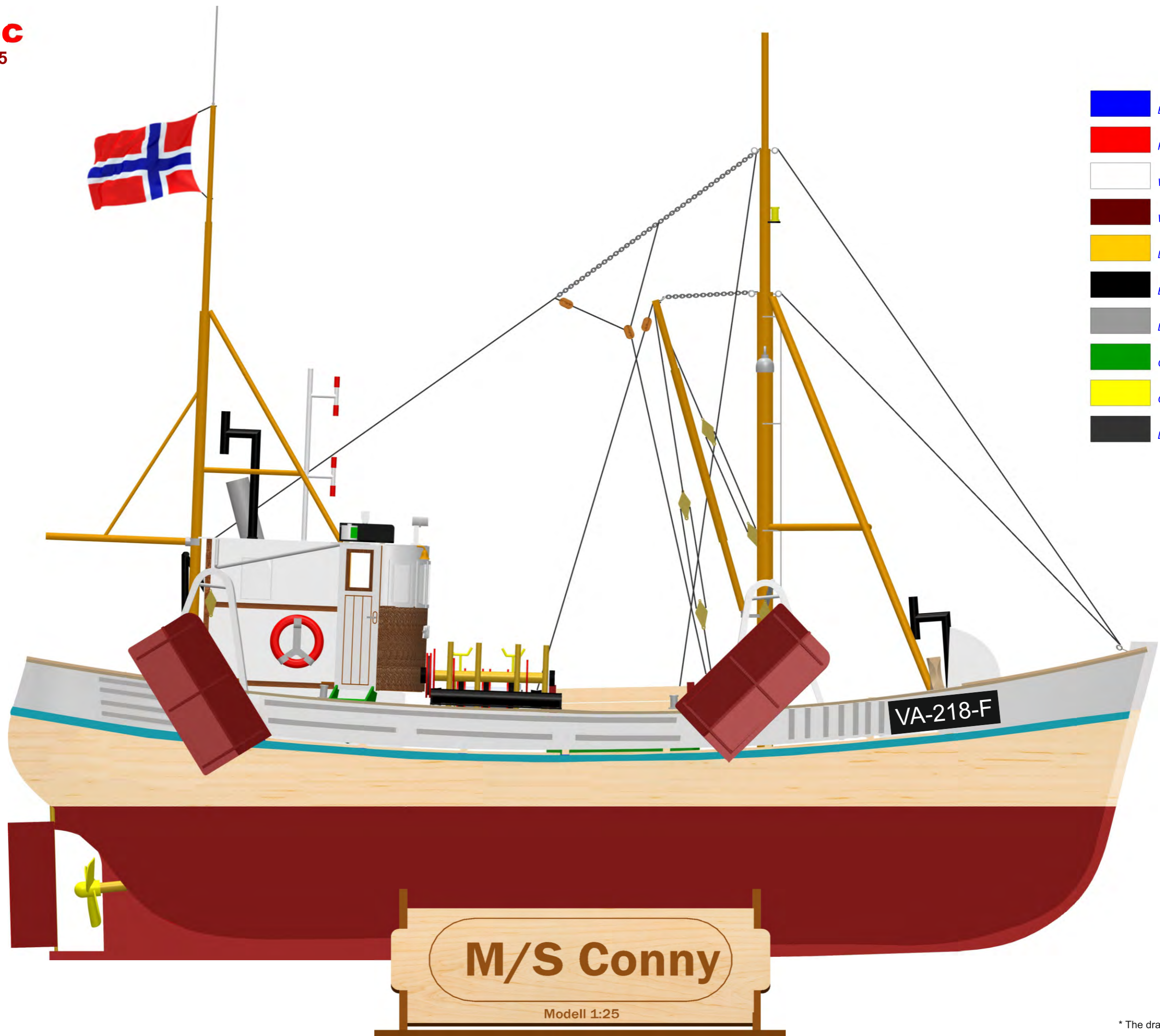


modell-tec
M/S CONNY 1/25



-  BLUE
-  RED
-  WHITE
-  WINE
-  DARK YELLOW
-  BLACK
-  LIGHT GREY
-  GREEN
-  GOLD
-  DARK GREY

M/S Conny

Modell 1:25

* The drawing is 1/2 scale of the model.

R/C hardware parts are not included kit. You have to buy them apart. If you build the model as R/C, you should place R/C parts suitable areas to reach easily to swap them anytime. Ensure every mechanic and digital parts working properly before close the deck. This drawing is just to give an idea where to place R/C parts. You can personalize placing due to your needs.

1
Attach and glue two parts-keel on a flat surface. Leave it to dry as putting weight on it.

Be aware of placing no:20 before you glue no:6-7-8-9 frames.

5
Start to cover at the level that is shown at the picture. Make wet the tips of the strips. So that they are bent easily. You restrain the cover strips mount eachother if you their width a little towards the tips. Place the deck after one covers trip is placed. First cover strip refers to the deck.

No need to open this area if you build the model static.

Ensure no:14-15-16-17-21 fit in the gap at the deck before you glue.

4
Cut off the supports for propellar shaft pipe.
Sand the edges of the frames on cover strips turning at the front and the back in turning angle.

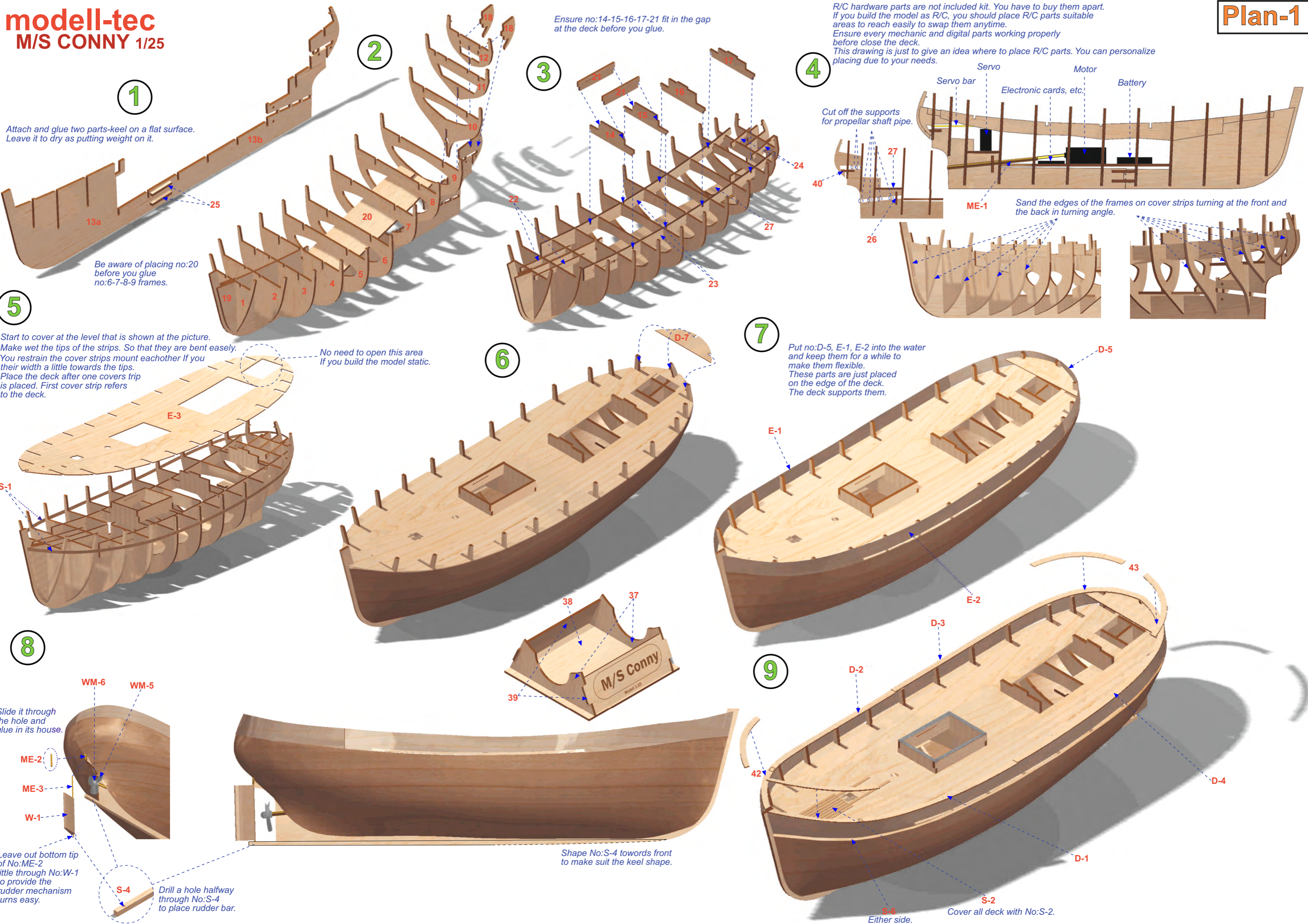
Servo, Motor, Battery, Servo bar, Electronic cards, etc., ME-1

7
Put no:D-5, E-1, E-2 into the water and keep them for a while to make them flexible. These parts are just placed on the edge of the deck. The deck supports them.

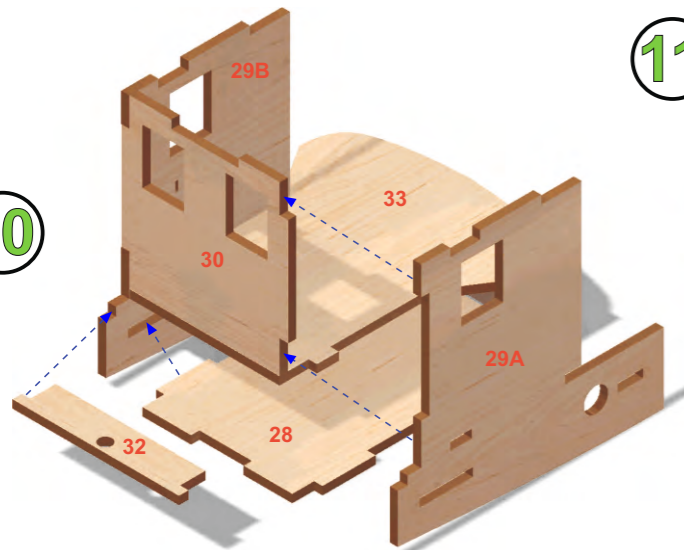
8
Slide it through the hole and glue in its house.
Leave out bottom tip of No:ME-2 little through No:W-1 to provide the rudder mechanism turns easy.
Drill a hole halfway through No:S-4 to place rudder bar.

Shape No:S-4 towards front to make suit the keel shape.

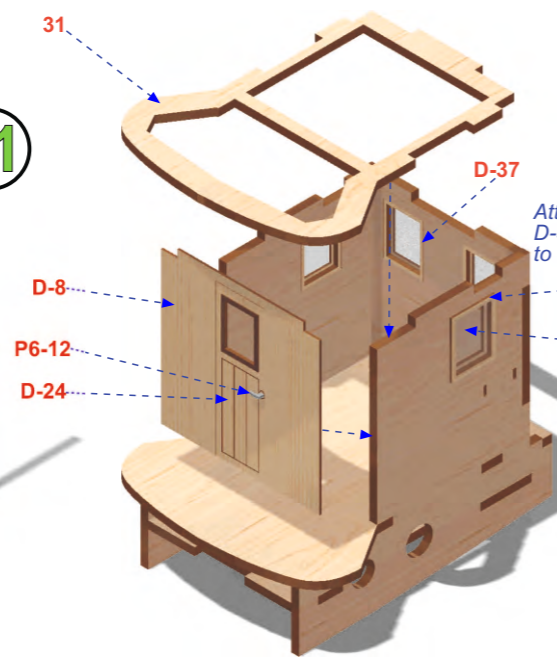
9
Cover all deck with No:S-2. Either side.



10

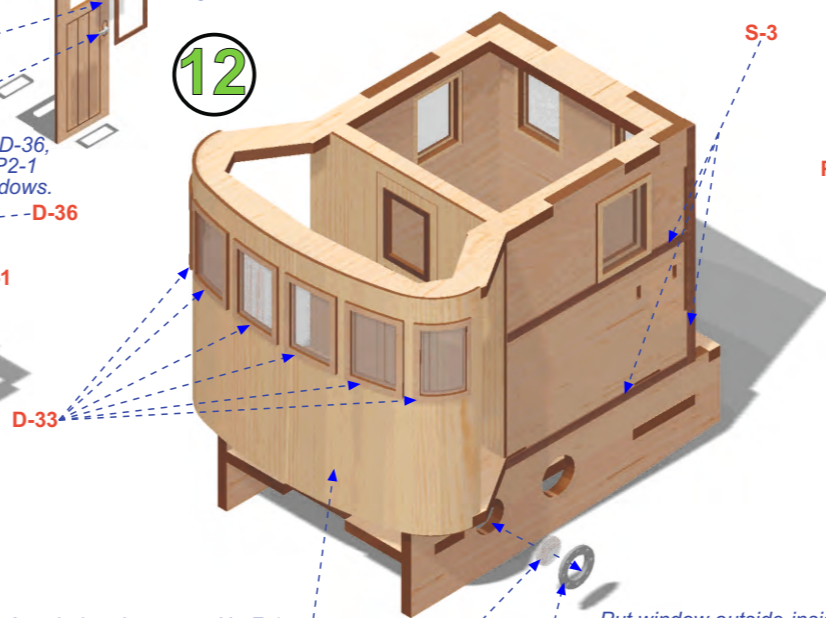


11

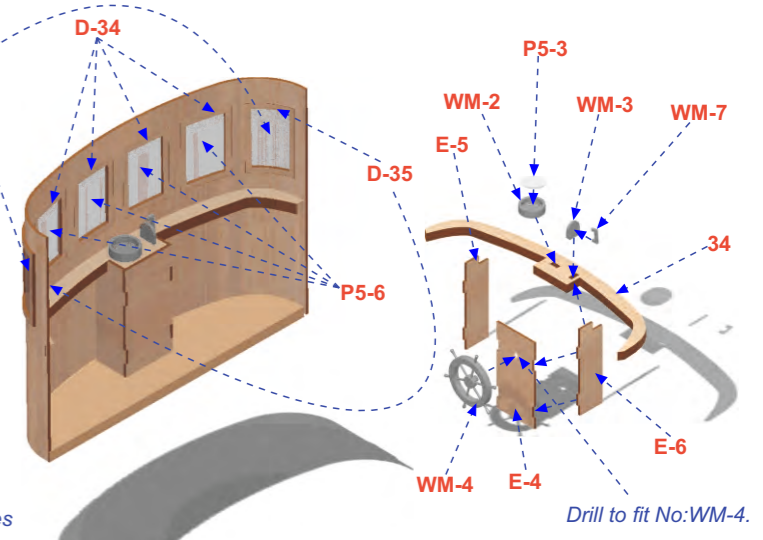


12

Care of No:P5-5 door glasses are placed inside of the window gap. No:K-1 window frames squeeze the glasses.



13



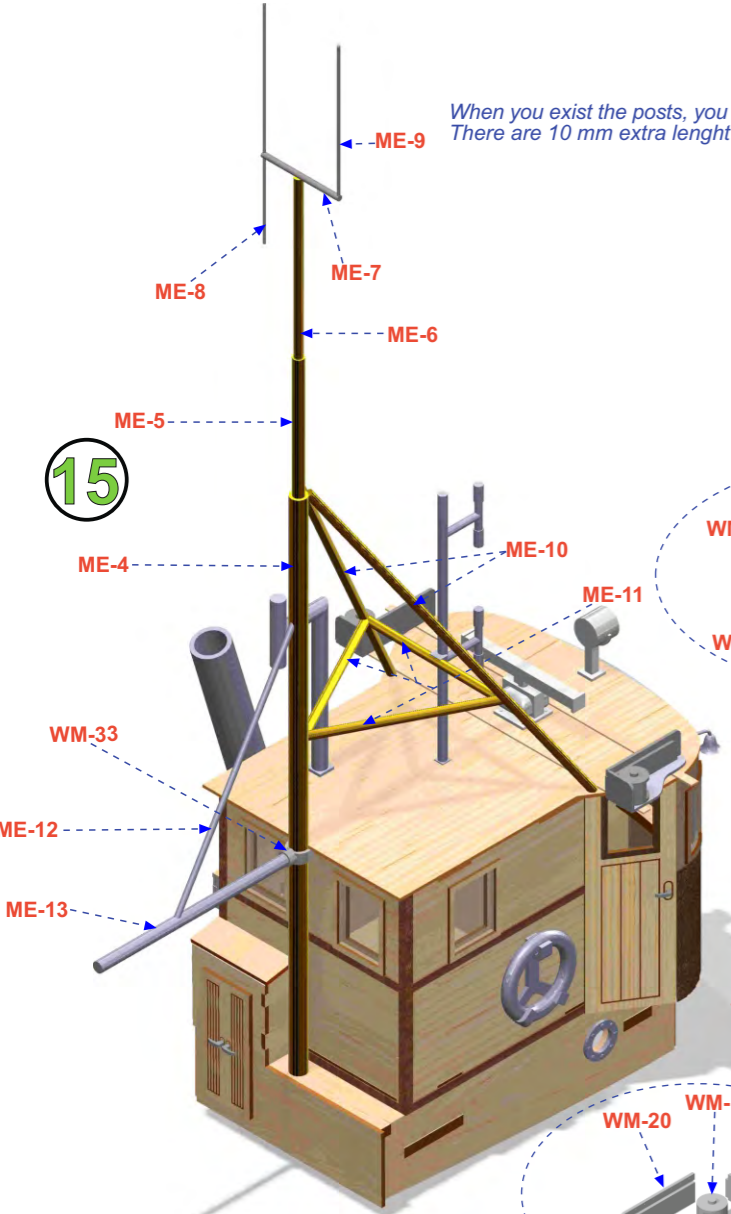
ATTENTION!
Refer the profile and bird-eye plans for the parts which need to be measured to place. The drawing in these plans is 1/2 scale of the model. You have duplicate the measurement of the part or distance.

Attach the glasses on No:F-1 after installation its place.

Put window outside-inside frames into the water and keep them for a while to make them flexible.

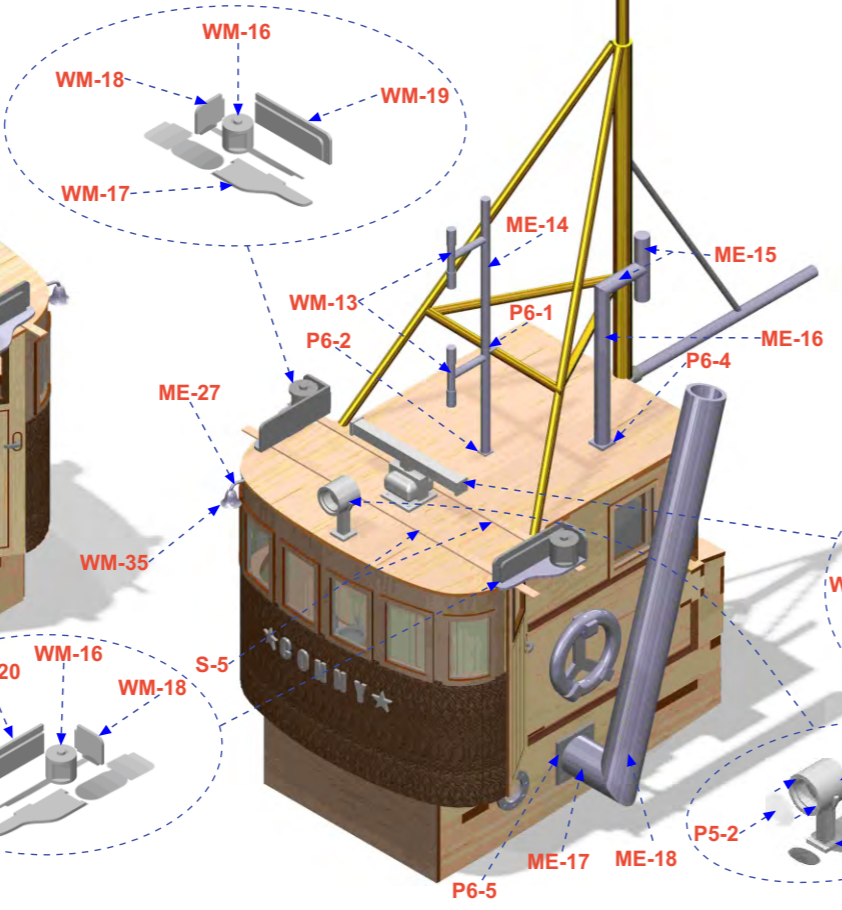
Drill to fit No:WM-4.

15

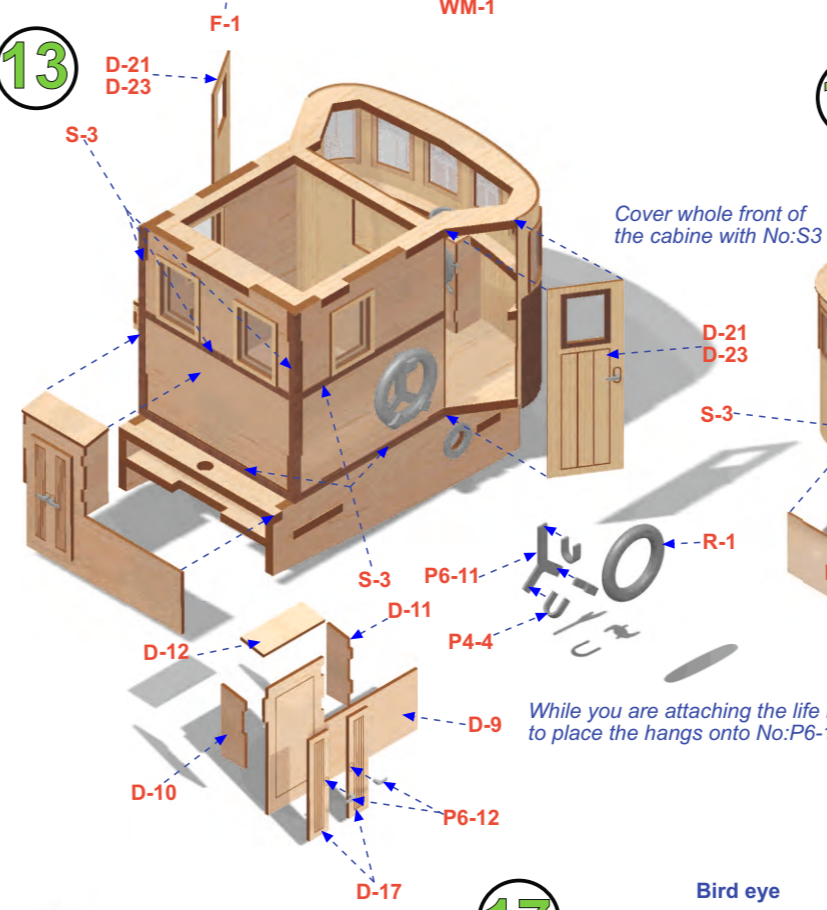


When you exist the posts, you slide the thinner post through the larger 10 mm inside. There are 10 mm extra lenght for the bars those goes through another pipe.

16



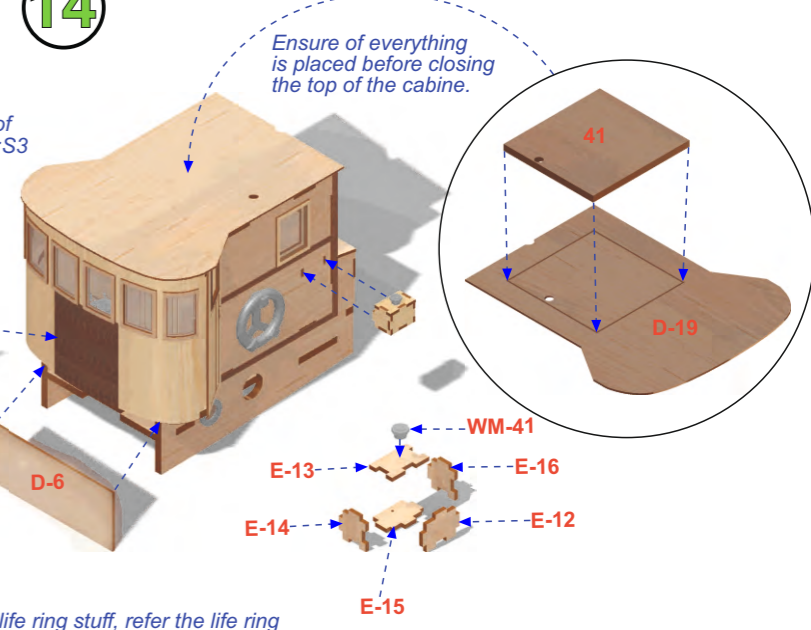
13



Cover whole front of the cabine with No:S3

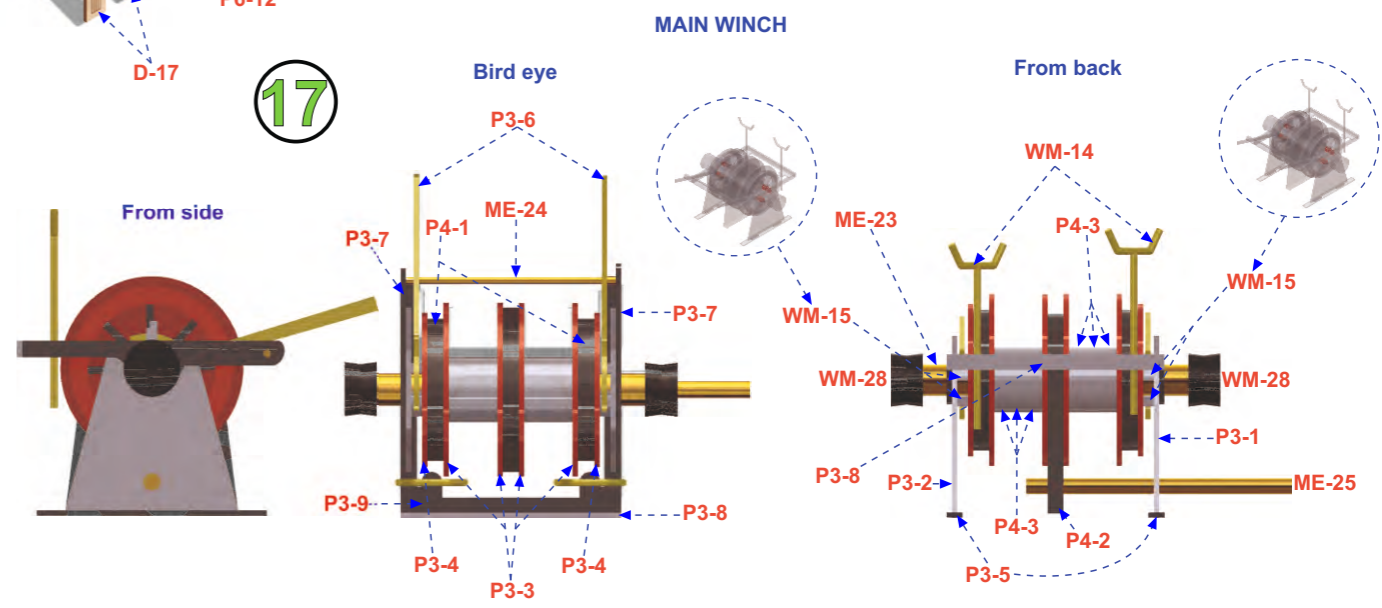
While you are attaching the life ring stuff, refer the life ring to place the hangs onto No:P6-11 part correctly.

14



Ensure of everything is placed before closing the top of the cabine.

17



From side

Bird eye

MAIN WINCH

From back

modell-tec M/S CONNY 1/25

Drill 1 mm holes on the posts to house No:45 eyebolts. If you are not able to drill posts, you can tie the rope directly instead of eyebolts on the posts.

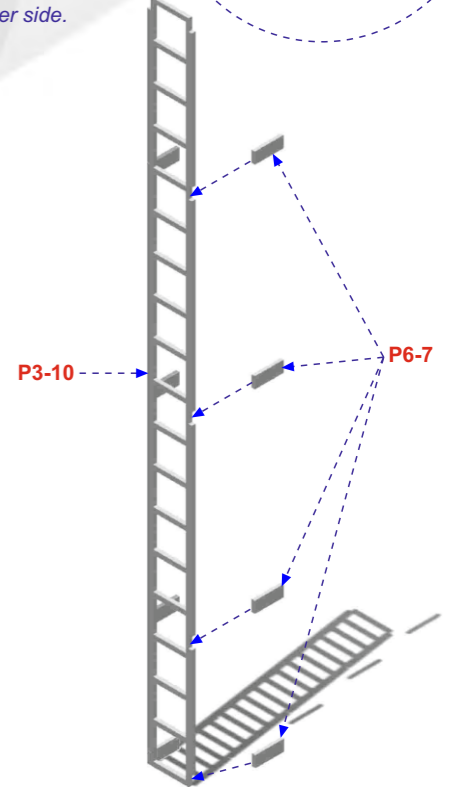
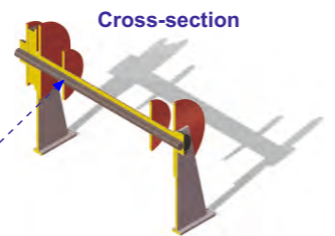
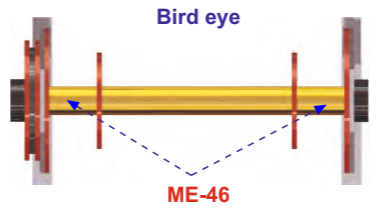
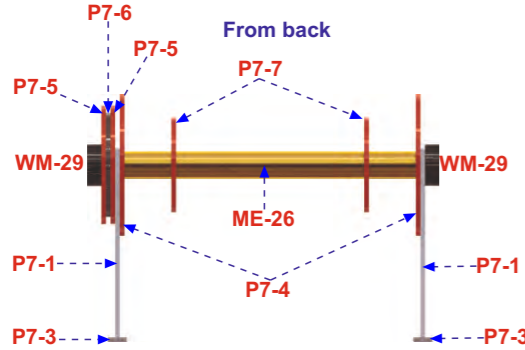
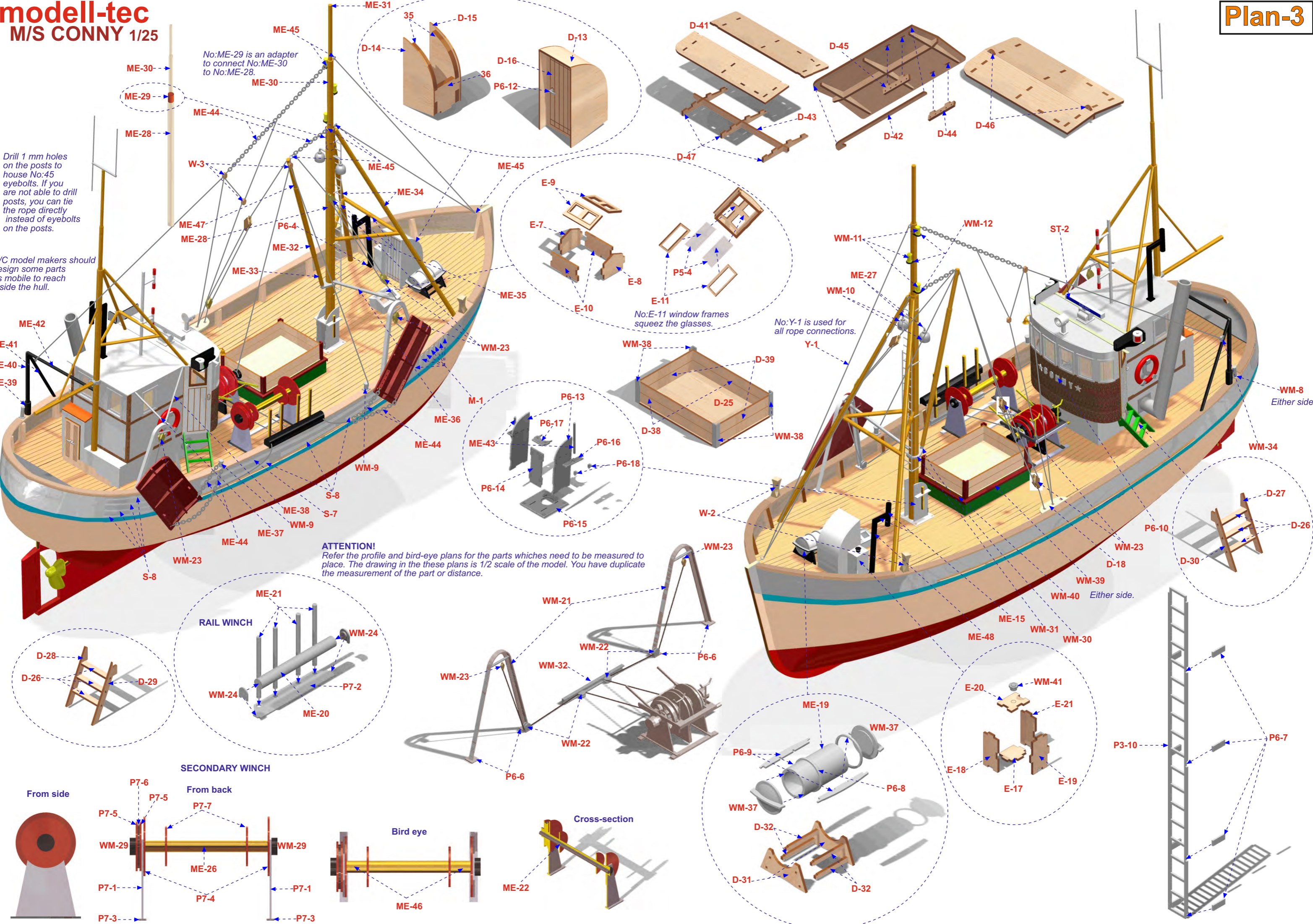
R/C model makers should design some parts as mobile to reach inside the hull.

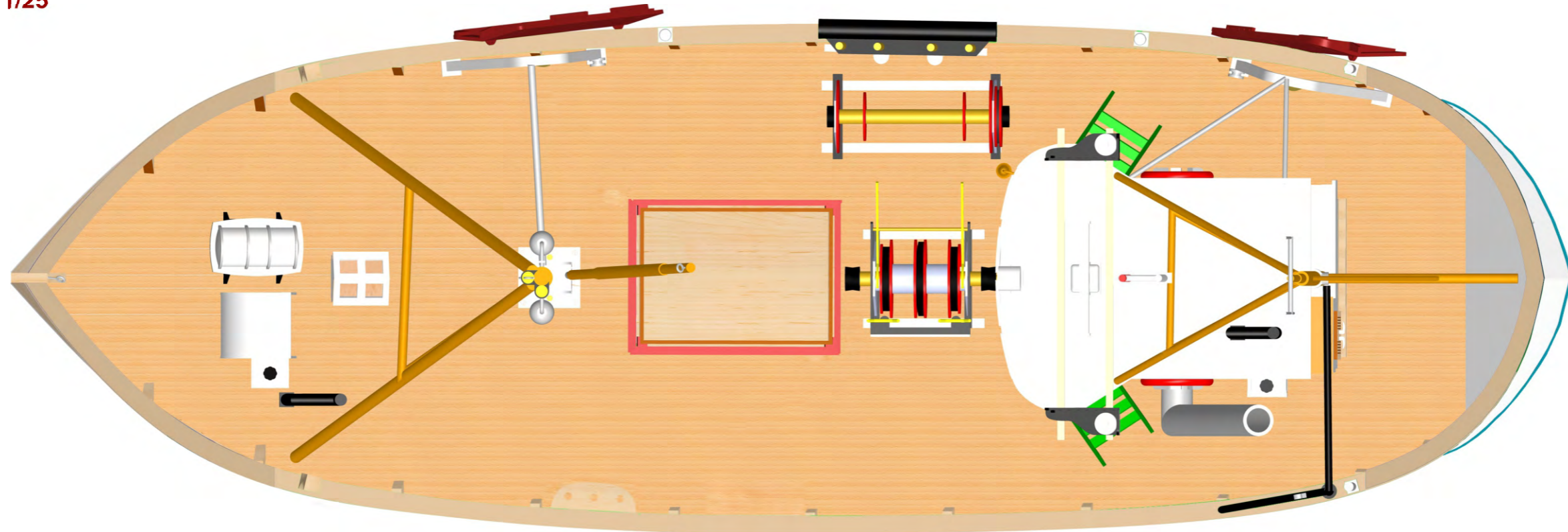
No:ME-29 is an adapter to connect No:ME-30 to No:ME-28.

No:E-11 window frames squeeze the glasses.

No:Y-1 is used for all rope connections.

ATTENTION!
Refer the profile and bird-eye plans for the parts which need to be measured to place. The drawing in these plans is 1/2 scale of the model. You have duplicate the measurement of the part or distance.





*Tegningen er i 1/2 skala av modellen.

modell-tec
M/S CONNY 1/25
Motor og RC installasjon.

Dette er tilleggsutstyr og ikke inkludert i byggesettet. Ønskes dette, kan vi levere det som trengs.

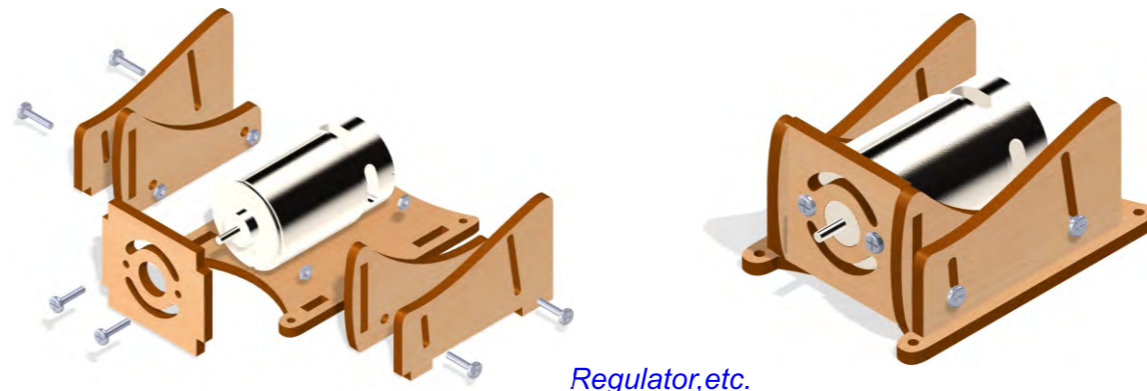
Motoren er en 500 - 600 elektromotor montert i motorholder. Rorstammen kobles til servoen på servo brettet (27). RC-mottager, fartsregulator og akku monteres i motorrommet, alt etter plass og størrelse på utstyret. Det er en fordel om RC-mottageren kommer så høyt i båten som mulig. Gjerne i styrehuset eller under dekket. Påse ved plassering av akku, utstyr og ballast at båten får en riktig balanse som passer til båten vannlinje.

Skal båten brukes på vann anbefales det og lim-slå skroget utvendig med Epoxy før lakkering og maling. Gjør propellhylsen vanntett ved å ha fett (grease) i den og på propellakslingen.

Maling og farger: Se bilde på eskelokk og beskrivelse på eskeside.

Lykke til med Conny!

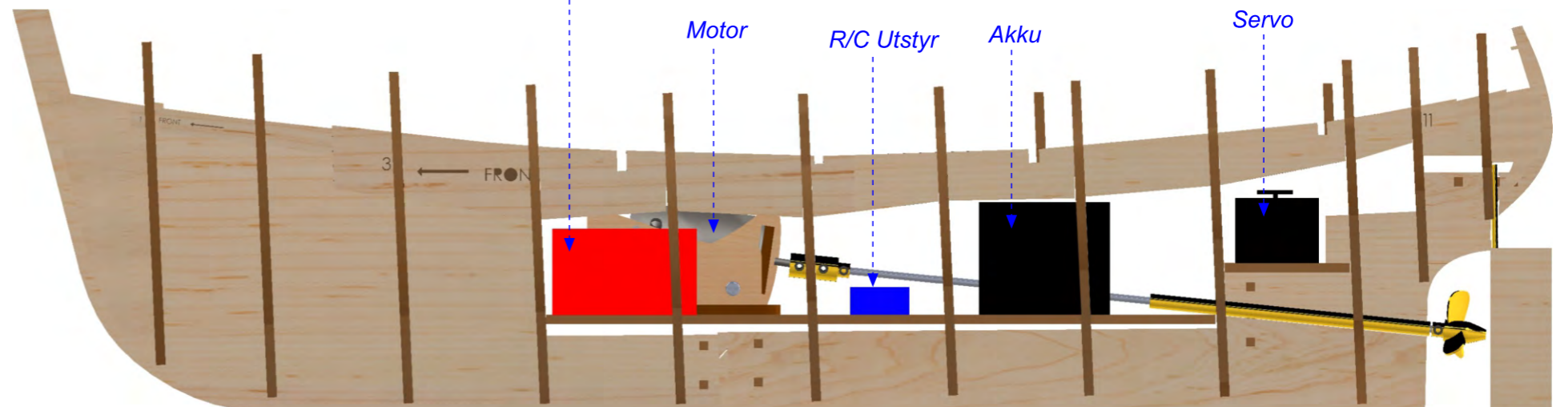
ØGREY-HOBBY



Regulator, etc.

Tegning-R/C

* Motor og RC utstyr er ikke inkludert i settet.



ASISTANT GUIDE

- ❖ Please read the instructions carefully before you start to build your model. Take notes if needed. So, you may find out the materials and the tools those you need.
- ❖ Use model knife to take out the parts the plywood sheets. Do not take them out with hand!
- ❖ Change of temperature effects on plywoods quickly. So that, do not release the plywoods. Keep them on a flat surface by putting weight on them.
- ❖ You may stick together the wooden parts easily if you sand the brown areas caused by laser with sand paper.
- ❖ You should use super glue and white glue to stick together the wooden parts and use the super glue for metal parts.
- ❖ Building the keel of your model, before stick the frames, be sure the frames properly seated on the keel. Otherwise you can't build the body of the model rightly. Exactly be sure that left and right side of the frames are compatible and symmetrical.
- ❖ After building the keel of your model, before the covering, you should test the frame edges by a cover strip. You should sand with a piece of sandpaper the frame edges at the right degree to touch the strips on to the surface exactly. The curves are mostly the front and back side of the body.
- ❖ You should keep the strip tips in the bowl filled with water approximately one hour. So that you may curve the strips on the curves easily these are mostly at the end and the front of the hull.
- ❖ You should cover the strip starting from the top for each side symmetrically.
- ❖ You should cut the upper side of the strip when overlap occurs especially at the front curve of the body.
- ❖ To make equal the surface of the body that caused by planking, you should sand with a piece of sandpaper (Firstly you should use thick sandpaper, then you can apply thin sandpaper), . You should fill the gaps after this processing. You may use leftover strips for wide gaps and model putty for small gaps.
- ❖ If you don't want to appear wooden tissue of the body of your model body; first, apply filler undercoat then sand with a thin sandpaper to make it ready to apply putty. Apply putty whole body and sandpaper again. Apply one more coat filler undercoat and sandpaper. You should not use very thick sandpaper to sand the putty and filler undercoat. You should repeat this process until you get the results as you want. You should apply undercoat paint to find out if any mistake appears at the body. The body gets ready for painting after these applications. You may use model brushes for filler coating. In order to understand whether the materials (such paint, filler, undercoat, varnish, etc.) are compatible with each other, you should test on the unnecessary parts.
- ❖ Some of the model's logo, name or the number are produced from decal paper. You should keep them in a bowl filled with warm water for two or three minutes. You should apply them to their places while releasing from their paper. You may attach easily If you apply gloss varnish to the place before applying the decals. You may apply matt, gloss or satin varnish after this application preferably.
- ❖ You should keep your model away from direct sunlight, heat and moist to avoid deformation in the course of time.

CONNY 1/25 PART LIST

| NO | QUANTITY | DESCRIPTION | SIZE | TYPE |
|-----------|----------|--|----------|------------------|
| 1...12 | 12 | Frames | 4 mm | Plywood |
| 13A-13B | 2 | Keel parts | 4 mm | Plywood |
| 14...17 | 4 | Cabine fixers | 4 mm | Plywood |
| 18 | 2 | Back blocks | 4 mm | Plywood |
| 19 | 2 | Front blocks | 4 mm | Plywood |
| 20 | 1 | R/C parts main table | 4 mm | Plywood |
| 21 | 2 | Cabine fixers | 4 mm | Plywood |
| 22 | 2 | Frame fixers-front | 4 mm | Plywood |
| 23 | 2 | Frame fixers-main | 4 mm | Plywood |
| 24 | 2 | Frame fixers-back | 4 mm | Plywood |
| 25 | 2 | Main keel locks | 4 mm | Plywood |
| 26 | 1 | Keel lock | 4 mm | Plywood |
| 27 | 1 | R/C servo table | 4 mm | Plywood |
| 28...33 | 7 | Cabine parts | 4 mm | Plywood |
| 34 | 1 | Cockpit panel | 4 mm | Plywood |
| 35-36 | 3 | Front cabine parts | 4 mm | Plywood |
| 37-38-39 | 5 | Base parts | 4 mm | Plywood |
| 40 | 1 | Keel lock | 4 mm | Plywood |
| 41 | 1 | Cabine roof part | 4 mm | Plywood |
| 42-43 | 4 | Rail upper parts | 4 mm | Plywood |
| D1...D4 | 4 | Rail parts | 1,5 mm | Plywood |
| D5 | 1 | Back panel | 1,5 mm | Plywood |
| D6 | 1 | Cabine front part | 1,5 mm | Plywood |
| D7 | 1 | Small back deck | 1,5 mm | Plywood |
| D8 | 1 | Cabine inside wall | 1,5 mm | Plywood |
| D9...D12 | 4 | Cabinet parts | 1,5 mm | Plywood |
| D13...D16 | 4 | Front cabine parts | 1,5 mm | Plywood |
| D17 | 2 | Cabinet doors | 1,5 mm | Plywood |
| D18 | 1 | Rope connection panel | 1,5 mm | Plywood |
| D19 | 1 | Roof part | 1,5 mm | Plywood |
| D20...D23 | 4 | Cabine outside door parts | 1,5 mm | Plywood |
| D24 | 1 | Cabine inside door | 1,5 mm | Plywood |
| D25 | 1 | Box bottom part | 1,5 mm | Plywood |
| D26...D30 | 10 | Cabine stair parts | 1,5 mm | Plywood |
| D31-D32 | 6 | Life boat base parts | 1,5 mm | Plywood |
| D33 | 6 | Cabine outside window frames | 1,5 mm | Plywood |
| D34 | 4 | Cabine inside window frames | 1,5 mm | Plywood |
| D35 | 2 | Cabine inside window frames for sideones | 1,5 mm | Plywood |
| D36 | 4 | Cabine back outside window frames | 1,5 mm | Plywood |
| D37 | 4 | Cabine back inside window frames | 1,5 mm | Plywood |
| D38-D39 | 4 | Box side parts | 1,5 mm | Plywood |
| D41...D47 | 20 | Lid parts | 1,5 mm | Plywood |
| D48...D51 | 5 | Drawer parts | 1,5 mm | Plywood |
| D52...D54 | 4 | Seat parts | 1,5 mm | Plywood |
| D55...D59 | 6 | Stove parts | 1,5 mm | Plywood |
| D60...D63 | 6 | Chair parts | 1,5 mm | Plywood |
| E1-E2 | 2 | Side panels | 1,5 mm | Plywood |
| E3 | 1 | Main deck | 1,5 mm | Plywood |
| E4-E5-E6 | 3 | Cockpit panel cabinet | 1,5 mm | Plywood |
| E7...E11 | 8 | Front cabine small window parts | 1,5 mm | Plywood |
| E12...E16 | 5 | Cabine reservoir | 1,5 mm | Plywood |
| E17...E21 | 5 | Front cabine reservoir | 1,5 mm | Plywood |
| F1 | 1 | Cabine front part | 1,5 mm | Flexible Plywood |
| K1 | 6 | Door window frames | 0,5 mm | Walnut Sheet |
| M1 | 7 | Outside vertical parts | 2,5 mm | Wood Sheet |
| ME1 | 1 | Propeller shaft pipe | 6x100 mm | Pipe |
| ME2 | 1 | Rudder shaft pipe | 3x30 mm | Pipe |
| ME3 | 1 | Rudder shaft | 2x140 mm | Flat Wire |
| ME4 | 1 | Back post main part | 6x220 mm | Pipe |
| ME5 | 1 | Back post medium part | 4x70 mm | Pipe |
| ME6 | 1 | Back post top part | 3x65 mm | Flat Wire |
| ME7 | 1 | Antenna part-horizontal | 2x35 mm | Flat Wire |
| ME8 | 1 | Antenna part-left vertical | 1x85 mm | Flat Wire |

ME9

1

Antenna part- right vertical

1x50 mm

Flat Wire

| NO | QUANTITY | DESCRIPTION | SIZE | TYPE |
|---------------|----------|---|-----------|-------------|
| ME10 | 2 | Back post supporters | 4x150 mm | Flat Wire |
| ME11 | 3 | Back post horizontal supporters | 4x60 mm | Flat Wire |
| ME12 | 1 | Back post boom supporter | 2x85 mm | Flat Wire |
| ME13 | 1 | Back post boom | 3x85 mm | Flat Wire |
| ME14 | 1 | Cabine roof antenna main part | 3x80 mm | Flat Wire |
| ME15 | 4 | Small funnel top parts | 5x18 mm | Flat Wire |
| ME16 | 1 | Small funnel main parts | 5x120 mm | Flat Wire |
| ME17 | 1 | Funnel bottom part | 13x35 mm | Pipe |
| ME18 | 1 | Funnel main part | 13x140 mm | Pipe |
| ME19 | 1 | Life boat capsule | 16x29 mm | Pipe |
| ME20 | 1 | Rail winch main shaft | 6x70 mm | Pipe |
| ME21 | 4 | Rail winch legs | 3x80 mm | Flat Wire |
| ME22 | 1 | Secondary winch shaft | 3x62 mm | Flat Wire |
| ME23 | 1 | Winch main bar | 6x40 mm | Pipe |
| ME24 | 1 | Winch supporter bar | 1,5x40 mm | Flat Wire |
| ME25 | 1 | Winch power shaft | 3x60 mm | Flat Wire |
| ME26 | 1 | Secondary winch middle shaft part-outside | 6x25 mm | Pipe |
| ME27 | 3 | Arms for lamps and bell | 1x20 mm | Flat Wire |
| ME28 | 1 | Main post | 10x280 mm | Pipe |
| ME29 | 1 | Main post adapter part | 8x16 mm | Pipe |
| ME30 | 1 | Main post middle part | 6x95 mm | Pipe |
| ME31 | 1 | Main post top part | 4x90 mm | Flat Wire |
| ME32 | 1 | Main post boom outside part | 6x98 mm | Pipe |
| ME33 | 1 | Main post boom inside part-bottom | 4x48 mm | Pipe |
| ME34 | 2 | Main post supporters | 5x280 mm | Flat Wire |
| ME35 | 3 | Main post horizontal supporters | 5x65 mm | Flat Wire |
| ME36 | 1 | Rail lid legs supporter bar-front | 3x88 mm | Flat Wire |
| ME37 | 1 | Rail lid legs supporter bar-back | 2x45 mm | Flat Wire |
| ME38 | 1 | Rail lid legs supporter bar-back | 2x78 mm | Flat Wire |
| ME39 | 1 | Rail post house | 6x15 mm | Pipe |
| ME40 | 1 | Rail post | 4x60 mm | Flat Wire |
| ME41 | 1 | Rail post supporter | 4x75 mm | Flat Wire |
| ME42 | 1 | Rail post supporter-horizontal | 4x85 mm | Flat Wire |
| ME43 | 2 | Main post bottom side bollards | 2x30 mm | Flat Wire |
| ME44 | 1 | Chain | Ready | Metal |
| ME45 | 6 | Eyebolt | Ready | Metal |
| ME46 | 2 | Secondary winch side shaft parts-outside | 6x10 mm | Pipe |
| ME47 | 1 | Main post boom inside part-top | 4x60 mm | Flat Wire |
| ME48 | 1 | Small funnel main parts | 5x63 mm | Flat Wire |
| P1-1 | 2 | Cabine glasses for sides on the front | 1 mm | Clear Sheet |
| P2-1 | 4 | Cabine back glasses | 2 mm | Plexy-Glass |
| P3-1...9 | 16 | Main winch parts | 1 mm | Plexy-Glass |
| P3-10 | 1 | Ladder | 1 mm | Plexy-Glass |
| P4-1...3 | 9 | Main winch parts | 3 mm | Plexy-Glass |
| P4-4 | 6 | Life ring hangs | 3 mm | Plexy-Glass |
| P5-1 | 2 | Porthole glasses | 1 mm | Plexy-Glass |
| P5-2 | 1 | Projector glass | 1 mm | Plexy-Glass |
| P5-3 | 1 | Gauge glass | 1 mm | Plexy-Glass |
| P5-4 | 2 | Front cabine glasses | 1 mm | Plexy-Glass |
| P5-5 | 3 | Door glasses | 1 mm | Plexy-Glass |
| P5-6 | 4 | Cabine front glasses | 1 mm | Plexy-Glass |
| P6-1 | 1 | Cabine roof antenna top supporter | 1 mm | Plexy-Glass |
| P6-2 | 1 | Cabine roof antenna house part | 1 mm | Plexy-Glass |
| P6-3 | 1 | Projector house part | 1 mm | Plexy-Glass |
| P6-4 | 2 | House of small funnels | 1 mm | Plexy-Glass |
| P6-5 | 1 | Funnel house | 1 mm | Plexy-Glass |
| P6-6 | 4 | Lid legs houses | 1 mm | Plexy-Glass |
| P6-7 | 8 | Ladder legs | 1 mm | Plexy-Glass |
| P6-8,P6-9 | 4 | Life boat parts | 1 mm | Plexy-Glass |
| P6-10 | 1 | Name plates | 1 mm | Plexy-Glass |
| P6-11 | 2 | Life ring hang parts | 1 mm | Plexy-Glass |
| P6-12 | 6 | Door handles | 1 mm | Plexy-Glass |
| P6-13...18 | 11 | Main post house parts | 1 mm | Plexy-Glass |
| P7-1,P7-3...7 | 12 | Secondary winch parts | 1 mm | Plexy-Glass |

| NO | QUANTITY | DESCRIPTION | SIZE | TYPE |
|-----------|----------|-----------------------------|---------------|-------------|
| P7-2 | 1 | Rail winch part | 1 mm | Plexy-Glass |
| R1 | 2 | Liferings | Ready | Plastic |
| S1 | 70 | Cover strips | 1,6x5x700 mm | Pine |
| S2 | 70 | Baswood second cover strips | 0,5x4x450 mm | Baswood |
| S3 | 15 | Walnut second cover strips | 0,5x3x300 mm | Walnut |
| S4 | 1 | Keel strip | 6x6x540 mm | Baswood |
| S5 | 1 | Board light bars | 1x2x300 mm | Baswood |
| S6 | 2 | Half a dowel-horizontally | 4x710 mm | Ayous |
| S7 | 1 | Half a dowel-horizontally | 4X350 mm | Ayous |
| S8 | 7 | Half a dowel-horizontally | 4x70 mm | Ayous |
| ST1 | 2 | Ship name | - | Sticker |
| ST2 | 1 | Radar brand | - | Sticker |
| ST3 | 1 | Flag | - | Sticker |
| W1 | 1 | Rudder | Ready | Wood |
| W2 | 2 | Front wooden bollards | 6,5x6,5x16 mm | Wood |
| W3 | 3 | Single-hole blocks | Ready | Wood |
| WM1 | 2 | Portholes | - | White Metal |
| WM2 | 1 | Gauge | - | White Metal |
| WM3 | 1 | Speed control | - | White Metal |
| WM4 | 1 | Rudder wheel | - | White Metal |
| WM5 | 1 | Propeller | - | White Metal |
| WM6 | 1 | Propellar shaft | - | White Metal |
| WM7 | 1 | Speed control handle | - | White Metal |
| WM8 | 2 | Long bollards | - | White Metal |
| WM9 | 2 | Small bollards | - | White Metal |
| WM10 | 2 | Large lamps | - | White Metal |
| WM11 | 3 | Small lamps | - | White Metal |
| WM12 | 3 | Small lamp bases | - | White Metal |
| WM13 | 2 | Cabine roof antenna parts | - | White Metal |
| WM14 | 2 | Winch arms | - | White Metal |
| WM15 | 4 | Winch fixer parts | - | White Metal |
| WM16 | 2 | Board lights | - | White Metal |
| WM17...20 | 6 | Board light base parts | - | White Metal |
| WM21 | 2 | Hull lid legs | - | White Metal |
| WM22 | 4 | Small pulley | - | White Metal |
| WM23 | 6 | Large pulley | - | White Metal |
| WM24 | 2 | Rail winch fixer parts | - | White Metal |
| WM25...27 | 3 | Radar parts | - | White Metal |
| WM28 | 2 | Main winch heads | - | White Metal |
| WM29 | 2 | Secondary winch heads | - | White Metal |
| WM30...31 | 2 | Main post connectors | - | White Metal |
| WM32 | 1 | Rail winch bottom part | - | White Metal |
| WM33 | 1 | Back post connector | - | White Metal |
| WM34 | 1 | Rail post connection part | - | White Metal |
| WM35 | 1 | Bell | - | White Metal |
| WM36 | 1 | Projector | - | White Metal |
| WM37 | 2 | Life boat capsule lids | - | White Metal |
| WM38...40 | 8 | Fish box construction parts | - | White Metal |
| WM41 | 2 | Reservoir lids | - | White Metal |
| Y1 | 1 | Rope | Ready | Yarn |